

## Cadherin-19 rabbit pAb

**Cat#: orb764699 (Manual)**

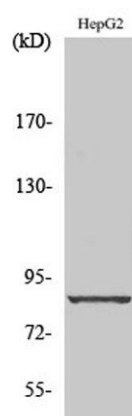
For research use only. Not intended for diagnostic use.

<b>Product Name</b>	Cadherin-19 rabbit pAb
<b>Host species</b>	Rabbit
<b>Applications</b>	WB;IHC;IF;ELISA
<b>Species Cross-Reactivity</b>	Human;Rat;Mouse;
<b>Recommended dilutions</b>	Western Blot: 1/500 - 1/2000. Immunohistochemistry: 1/100 - 1/300. Immunofluorescence: 1/200 - 1/1000. ELISA: 1/20000. Not yet tested in other applications.
<b>Immunogen</b>	The antiserum was produced against synthesized peptide derived from human CDH19. AA range:371-420
<b>Specificity</b>	Cadherin-19 Polyclonal Antibody detects endogenous levels of Cadherin-19 protein.
<b>Formulation</b>	Liquid in PBS containing 50% glycerol, 0.5% BSA and 0.02% sodium azide..
<b>Storage</b>	Store at -20°C. Avoid repeated freeze-thaw cycles.
<b>Protein Name</b>	Cadherin-19
<b>Gene Name</b>	CDH19
<b>Cellular localization</b>	Cell membrane; Single-pass type I membrane protein.
<b>Purification</b>	The antibody was affinity-purified from rabbit antiserum by affinity-chromatography using epitope-specific immunogen.
<b>Clonality</b>	Polyclonal

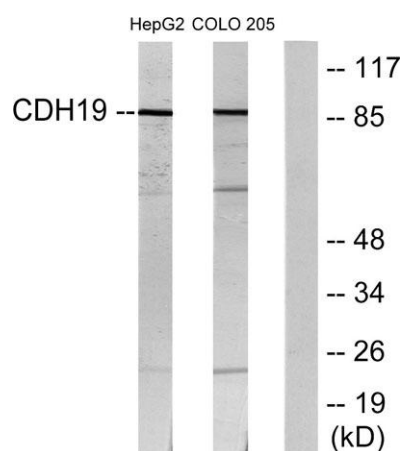
<b>Concentration</b>	1 mg/ml
<b>Observed band</b>	87kD
<b>Human Gene ID</b>	28513
<b>Human Swiss-Prot Number</b>	Q9H159
<b>Alternative Names</b>	CDH19; CDH7L2; Cadherin-19

### Background

This gene is one of three related type II cadherin genes situated in a cluster on chromosome 18. The encoded protein is a calcium dependent cell-cell adhesion glycoprotein containing five extracellular cadherin repeats. Loss of cadherins may be associated with cancer formation. Alternative splicing results in multiple transcript variants for this gene. [provided by RefSeq, Aug 2012],



**Western Blot analysis of various cells using Cadherin-19 Polyclonal Antibody diluted at 1:1000**



**Western blot analysis of lysates from HepG2 and COLO205 cells, using CDH19 Antibody. The lane on the right is blocked with the synthesized peptide.**