

**Cacna2d4 rabbit pAb****Cat#: orb764696 (Manual)**

For research use only. Not intended for diagnostic use.

<b>Product Name</b>	Cacna2d4 rabbit pAb
<b>Host species</b>	Rabbit
<b>Applications</b>	WB;ELISA
<b>Species Cross-Reactivity</b>	Human;Mouse;Rat
<b>Recommended dilutions</b>	Western Blot: 1/500 - 1/2000. ELISA: 1/20000. Not yet tested in other applications.
<b>Immunogen</b>	The antiserum was produced against synthesized peptide derived from human CACNA2D4. AA range:548-597
<b>Specificity</b>	Cacna2d4 Polyclonal Antibody detects endogenous levels of Cacna2d4 protein.
<b>Formulation</b>	Liquid in PBS containing 50% glycerol, 0.5% BSA and 0.02% sodium azide..
<b>Storage</b>	Store at -20°C. Avoid repeated freeze-thaw cycles.
<b>Protein Name</b>	Voltage-dependent calcium channel subunit alpha-2/delta-4
<b>Gene Name</b>	CACNA2D4
<b>Cellular localization</b>	Membrane ; Single-pass type I membrane protein .
<b>Purification</b>	The antibody was affinity-purified from rabbit antiserum by affinity-chromatography using epitope-specific immunogen.
<b>Clonality</b>	Polyclonal

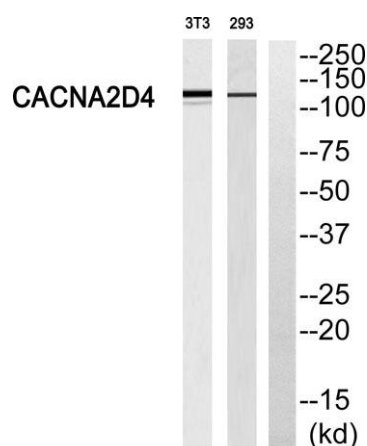
<b>Concentration</b>	1 mg/ml
<b>Observed band</b>	130kD
<b>Human Gene ID</b>	93589
<b>Human Swiss-Prot Number</b>	Q7Z3S7
<b>Alternative Names</b>	CACNA2D4; Voltage-dependent calcium channel subunit alpha-2/delta-4; Voltage-gated calcium channel subunit alpha-2/delta-4

### Background

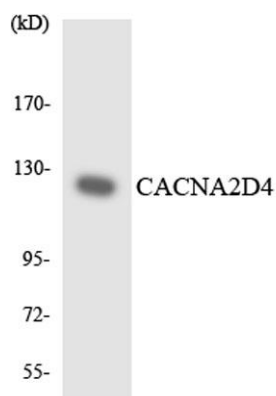
calcium voltage-gated channel auxiliary subunit alpha2delta 4(CACNA2D4) Homo sapiens This gene encodes a member of the alpha-2/delta subunit family, a protein in the voltage-dependent calcium channel complex. Calcium channels mediate the influx of calcium ions into the cell upon membrane polarization and consist of a complex of alpha-1, alpha-2/delta, beta, and gamma subunits in a 1:1:1:1 ratio. Various versions of each of these subunits exist, either expressed from similar genes or the result of alternative splicing. Research on a highly similar protein in rabbit suggests the protein described in this record is cleaved into alpha-2 and delta subunits. Alternate transcriptional splice variants of this gene have been observed but have not been thoroughly characterized. [provided by RefSeq, Jul 2008],



**Western Blot analysis of various cells using Cacna2d4 Polyclonal Antibody**



Western blot analysis of CACNA2D4 Antibody. The lane on the right is blocked with the CACNA2D4 peptide.



Western blot analysis of the lysates from COLO205 cells using CACNA2D4 antibody.