

CABC1 rabbit pAb**Cat#: orb764692 (Manual)**

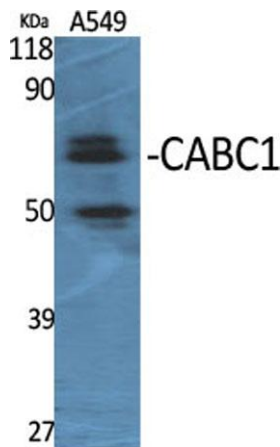
For research use only. Not intended for diagnostic use.

Product Name	CABC1 rabbit pAb
Host species	Rabbit
Applications	WB;IHC;IF;ELISA
Species Cross-Reactivity	Human;Mouse;Rat
Recommended dilutions	Western Blot: 1/500 - 1/2000. Immunohistochemistry: 1/100 - 1/300. Immunofluorescence: 1/200 - 1/1000. ELISA: 1/10000. Not yet tested in other applications.
Immunogen	The antiserum was produced against synthesized peptide derived from human ADCK3. AA range:301-350
Specificity	CABC1 Polyclonal Antibody detects endogenous levels of CABC1 protein.
Formulation	Liquid in PBS containing 50% glycerol, 0.5% BSA and 0.02% sodium azide..
Storage	Store at -20°C. Avoid repeated freeze-thaw cycles.
Protein Name	Chaperone activity of bcl complex-like mitochondrial
Gene Name	ADCK3
Cellular localization	Mitochondrion . Membrane ; Single-pass membrane protein .
Purification	The antibody was affinity-purified from rabbit antiserum by affinity-chromatography using epitope-specific immunogen.
Clonality	Polyclonal

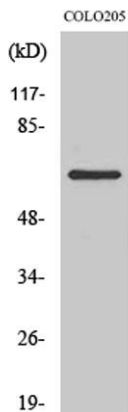
Concentration	1 mg/ml
Observed band	50kD
Human Gene ID	56997
Human Swiss-Prot Number	Q8NI60
Alternative Names	ADCK3; CABC1; PP265; Chaperone activity of bc1 complex-like; mitochondrial; Chaperone-ABC1-like; aarF domain-containing protein kinase 3

Background

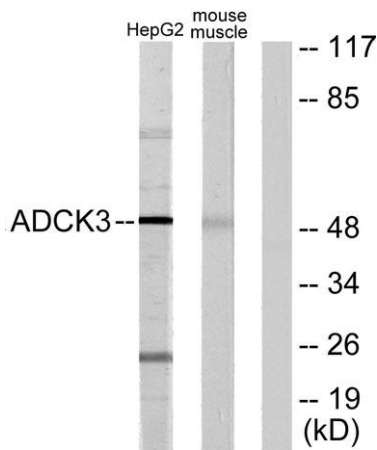
This gene encodes a mitochondrial protein similar to yeast ABC1, which functions in an electron-transferring membrane protein complex in the respiratory chain. It is not related to the family of ABC transporter proteins. Expression of this gene is induced by the tumor suppressor p53 and in response to DNA damage, and inhibiting its expression partially suppresses p53-induced apoptosis. Alternatively spliced transcript variants have been found; however, their full-length nature has not been determined. [provided by RefSeq, Jul 2008],



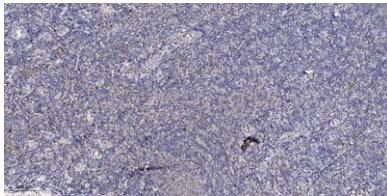
Western Blot analysis of various cells using CABC1 Polyclonal Antibody



Western Blot analysis of COLO205 cells using CABC1 Polyclonal Antibody



Western blot analysis of lysates from HepG2 and mouse muscle cells, using ADCK3 Antibody. The lane on the right is blocked with the synthesized peptide.



Immunohistochemical analysis of paraffin-embedded human tonsil. 1, Antibody was diluted at 1:200(4° overnight). 2, Tris-EDTA,pH9.0 was used for antigen retrieval. 3,Secondary antibody was diluted at 1:200(room temperature, 30min).