

CA XIII rabbit pAb

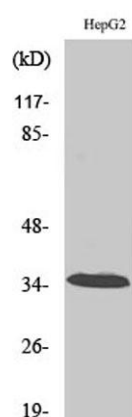
Cat#: orb764690 (Manual)

For research use only. Not intended for diagnostic use.

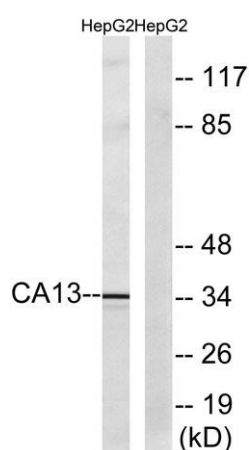
Product Name	CA XIII rabbit pAb
Host species	Rabbit
Applications	WB;ELISA
Species Cross-Reactivity	Human;Mouse
Recommended dilutions	Western Blot: 1/500 - 1/2000. ELISA: 1/10000. Not yet tested in other applications.
Immunogen	The antiserum was produced against synthesized peptide derived from human CA13. AA range:141-190
Specificity	CA XIII Polyclonal Antibody detects endogenous levels of CA XIII protein.
Formulation	Liquid in PBS containing 50% glycerol, 0.5% BSA and 0.02% sodium azide..
Storage	Store at -20°C. Avoid repeated freeze-thaw cycles.
Protein Name	Carbonic anhydrase 13
Gene Name	CA13
Cellular localization	cytosol,myelin sheath,intracellular membrane-bounded organelle,
Purification	The antibody was affinity-purified from rabbit antiserum by affinity-chromatography using epitope-specific immunogen.
Clonality	Polyclonal

Concentration	1 mg/ml
Observed band	35kD
Human Gene ID	377677
Human Swiss-Prot Number	Q8N1Q1
Alternative Names	CA13; Carbonic anhydrase 13; Carbonate dehydratase XIII; Carbonic anhydrase XIII; CA-XIII

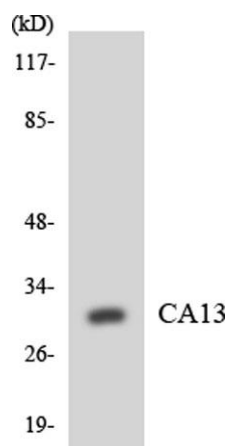
Background Carbonic anhydrases (CAs) are a family of zinc metalloenzymes. For background information on the CA family, see MIM 114800.[supplied by OMIM, Mar 2008],



Western Blot analysis of various cells using CA XIII Polyclonal Antibody



Western blot analysis of lysates from HepG2 cells, using CA13 Antibody. The lane on the right is blocked with the synthesized peptide.



Western blot analysis of the lysates from K562 cells using CA13 antibody.