

**BTF rabbit pAb****Cat#: orb764672 (Manual)**

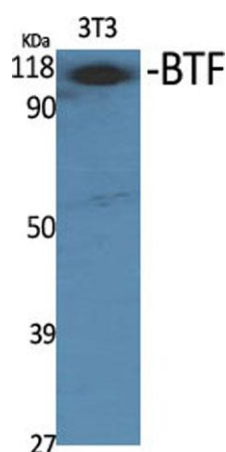
For research use only. Not intended for diagnostic use.

<b>Product Name</b>	BTF rabbit pAb
<b>Host species</b>	Rabbit
<b>Applications</b>	WB;ELISA
<b>Species Cross-Reactivity</b>	Human;Mouse;Rat
<b>Recommended dilutions</b>	Western Blot: 1/500 - 1/2000. ELISA: 1/10000. Not yet tested in other applications.
<b>Immunogen</b>	The antiserum was produced against synthesized peptide derived from human BCLAF1. AA range:281-330
<b>Specificity</b>	BTF Polyclonal Antibody detects endogenous levels of BTF protein.
<b>Formulation</b>	Liquid in PBS containing 50% glycerol, 0.5% BSA and 0.02% sodium azide..
<b>Storage</b>	Store at -20°C. Avoid repeated freeze-thaw cycles.
<b>Protein Name</b>	Bcl-2-associated transcription factor 1
<b>Gene Name</b>	BCLAF1
<b>Cellular localization</b>	Cytoplasm. Nucleus. Nucleus speckle . Nucleus, nucleoplasm .
<b>Purification</b>	The antibody was affinity-purified from rabbit antiserum by affinity-chromatography using epitope-specific immunogen.
<b>Clonality</b>	Polyclonal

<b>Concentration</b>	1 mg/ml
<b>Observed band</b>	106kD
<b>Human Gene ID</b>	9774
<b>Human Swiss-Prot Number</b>	Q9NYF8
<b>Alternative Names</b>	BCLAF1; BTF; KIAA0164; Bcl-2-associated transcription factor 1; Btf

### Background

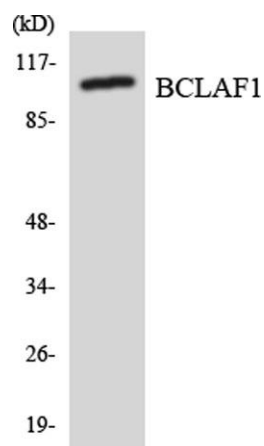
This gene encodes a transcriptional repressor that interacts with several members of the BCL2 family of proteins. Overexpression of this protein induces apoptosis, which can be suppressed by co-expression of BCL2 proteins. The protein localizes to dot-like structures throughout the nucleus, and redistributes to a zone near the nuclear envelope in cells undergoing apoptosis. Multiple transcript variants encoding different isoforms have been found for this gene. [provided by RefSeq, Jul 2008],



Western Blot analysis of various cells using BTF Polyclonal Antibody



Western Blot analysis of A549 cells using BTF Polyclonal Antibody



Western blot analysis of the lysates from HeLa cells using BCLAF1 antibody.