

BRS-3 rabbit pAb**Cat#: orb764669 (Manual)**

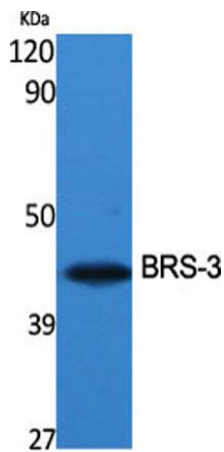
For research use only. Not intended for diagnostic use.

Product Name	BRS-3 rabbit pAb
Host species	Rabbit
Applications	WB;IF;ELISA
Species Cross-Reactivity	Human;Rat;Mouse;
Recommended dilutions	Western Blot: 1/500 - 1/2000. Immunofluorescence: 1/200 - 1/1000. ELISA: 1/40000. Not yet tested in other applications.
Immunogen	The antiserum was produced against synthesized peptide derived from human BRS3. AA range:161-210
Specificity	BRS-3 Polyclonal Antibody detects endogenous levels of BRS-3 protein.
Formulation	Liquid in PBS containing 50% glycerol, 0.5% BSA and 0.02% sodium azide..
Storage	Store at -20°C. Avoid repeated freeze-thaw cycles.
Protein Name	Bombesin receptor subtype-3
Gene Name	BRS3
Cellular localization	Cell membrane; Multi-pass membrane protein.
Purification	The antibody was affinity-purified from rabbit antiserum by affinity-chromatography using epitope-specific immunogen.
Clonality	Polyclonal

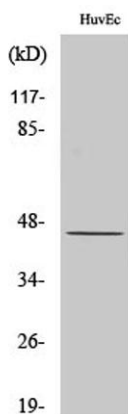
Concentration	1 mg/ml
Observed band	44kD
Human Gene ID	680
Human Swiss-Prot Number	P32247
Alternative Names	BRS3; Bombesin receptor subtype-3; BRS-3

Background

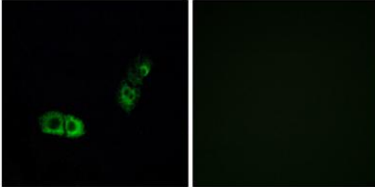
The protein encoded by this gene is a G protein-coupled membrane receptor that binds bombesin-like peptides. This binding results in activation of a phosphatidylinositol-calcium second messenger system, with physiological effects including regulation of metabolic rate, glucose metabolism, and hypertension. [provided by RefSeq, Sep 2011],



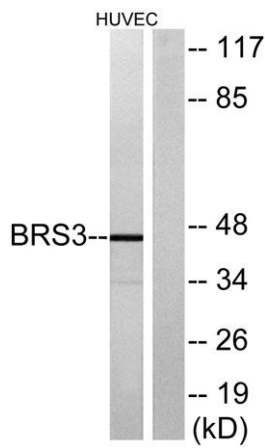
Western Blot analysis of various cells using BRS-3 Polyclonal Antibody



Western Blot analysis of HuvEc cells using BRS-3 Polyclonal Antibody



Immunofluorescence analysis of A549 cells, using BRS3 Antibody. The picture on the right is blocked with the synthesized peptide.



Western blot analysis of lysates from HUVEC cells, using BRS3 Antibody. The lane on the right is blocked with the synthesized peptide.