

**Brp44L rabbit pAb****Cat#: orb764668 (Manual)**

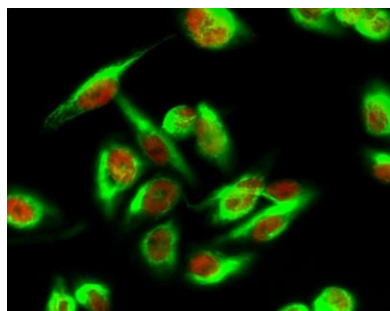
For research use only. Not intended for diagnostic use.

<b>Product Name</b>	Brp44L rabbit pAb
<b>Host species</b>	Rabbit
<b>Applications</b>	WB;IHC;IF;ELISA
<b>Species Cross-Reactivity</b>	Human;Mouse;Rat
<b>Recommended dilutions</b>	Western Blot: 1/500 - 1/2000. Immunohistochemistry: 1/100 - 1/300. Immunofluorescence: 1/200 - 1/1000. ELISA: 1/20000. Not yet tested in other applications.
<b>Immunogen</b>	The antiserum was produced against synthesized peptide derived from human BRP44L. AA range:11-60
<b>Specificity</b>	Brp44L Polyclonal Antibody detects endogenous levels of Brp44L protein.
<b>Formulation</b>	Liquid in PBS containing 50% glycerol, 0.5% BSA and 0.02% sodium azide..
<b>Storage</b>	Store at -20°C. Avoid repeated freeze-thaw cycles.
<b>Protein Name</b>	Mitochondrial pyruvate carrier 1
<b>Gene Name</b>	MPC1
<b>Cellular localization</b>	Mitochondrion inner membrane ; Multi-pass membrane protein .
<b>Purification</b>	The antibody was affinity-purified from rabbit antiserum by affinity-chromatography using epitope-specific immunogen.
<b>Clonality</b>	Polyclonal

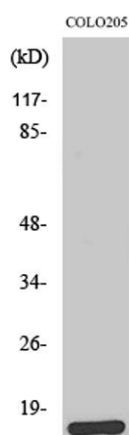
<b>Concentration</b>	1 mg/ml
<b>Observed band</b>	12kD
<b>Human Gene ID</b>	51660
<b>Human Swiss-Prot Number</b>	Q9Y5U8
<b>Alternative Names</b>	MPC1; BRP44L; CGI-129; HSPC040; PNAS-115; Mitochondrial pyruvate carrier 1; Brain protein 44-like protein

### Background

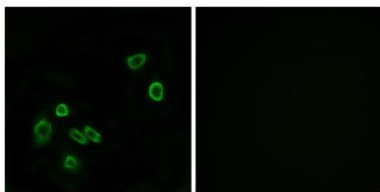
The protein encoded by this gene is part of an MPC1/MPC2 heterodimer that is responsible for transporting pyruvate into mitochondria. The encoded protein is found in the inner mitochondrial membrane. Defects in this gene are a cause of mitochondrial pyruvate carrier deficiency. Several transcript variants, some protein coding and one non-protein coding, have been found for this gene. [provided by RefSeq, Aug 2012],



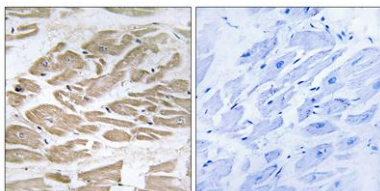
**Immunofluorescence analysis of HeLa cell.** 1, Brp44L Polyclonal Antibody (green) was diluted at 1:200 (4° overnight). (red) was diluted at 1:200 (4° overnight). 2, Goat Anti Rabbit Alexa Fluor 488 Catalog: RS3211 was diluted at 1:1000 (room temperature, 50min). Goat Anti Mouse Alexa Fluor 594 Catalog: RS3608 was diluted at 1:1000 (room temperature, 50min).



**Western Blot analysis of various cells using Brp44L Polyclonal Antibody**



**Immunofluorescence analysis of A549 cells, using BRP44L Antibody. The picture on the right is blocked with the synthesized peptide.**



**Immunohistochemistry analysis of paraffin-embedded human heart tissue, using BRP44L Antibody. The picture on the right is blocked with the synthesized peptide.**