

BMP-8B rabbit pAb**Cat#: orb764656 (Manual)**

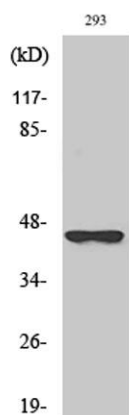
For research use only. Not intended for diagnostic use.

Product Name	BMP-8B rabbit pAb
Host species	Rabbit
Applications	WB;ELISA
Species Cross-Reactivity	Human;Rat;Mouse;
Recommended dilutions	Western Blot: 1/500 - 1/2000. ELISA: 1/40000. Not yet tested in other applications.
Immunogen	The antiserum was produced against synthesized peptide derived from human BMP8B. AA range:261-310
Specificity	BMP-8B Polyclonal Antibody detects endogenous levels of BMP-8B protein.
Formulation	Liquid in PBS containing 50% glycerol, 0.5% BSA and 0.02% sodium azide..
Storage	Store at -20°C. Avoid repeated freeze-thaw cycles.
Protein Name	Bone morphogenetic protein 8B
Gene Name	BMP8B
Cellular localization	Secreted .
Purification	The antibody was affinity-purified from rabbit antiserum by affinity-chromatography using epitope-specific immunogen.
Clonality	Polyclonal

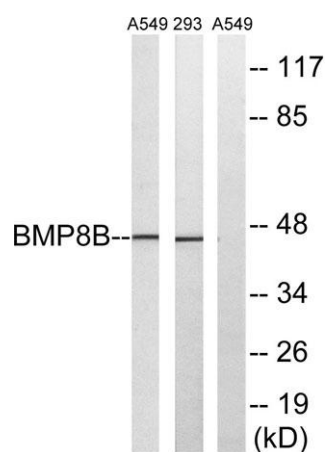
Concentration	1 mg/ml
Observed band	45kD
Human Gene ID	656
Human Swiss-Prot Number	P34820
Alternative Names	BMP8B; BMP8; Bone morphogenetic protein 8B; BMP-8; BMP-8B; Osteogenic protein 2; OP-2

Background

This gene encodes a secreted ligand of the TGF-beta (transforming growth factor-beta) superfamily of proteins. Ligands of this family bind various TGF-beta receptors leading to recruitment and activation of SMAD family transcription factors that regulate gene expression. The encoded preproprotein is proteolytically processed to generate each subunit of the disulfide-linked homodimer. The encoded protein stimulates thermogenesis in brown adipose tissue. Expression of this gene may be downregulated in pancreatic cancer. This gene may have arose from a gene duplication event and its gene duplicate is also present on chromosome 1. [provided by RefSeq, Jul 2016],



Western Blot analysis of various cells using BMP-8B Polyclonal Antibody diluted at 1:2000



Western blot analysis of lysates from 293 and A549 cells, using BMP8B Antibody. The lane on the right is blocked with the synthesized peptide.