

**BMP-3 rabbit pAb****Cat#: orb764651 (Manual)**

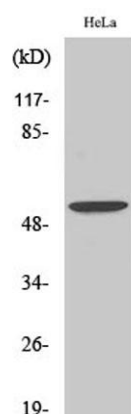
For research use only. Not intended for diagnostic use.

<b>Product Name</b>	BMP-3 rabbit pAb
<b>Host species</b>	Rabbit
<b>Applications</b>	WB;IHC;IF;ELISA
<b>Species Cross-Reactivity</b>	Human;Mouse;Rat
<b>Recommended dilutions</b>	Western Blot: 1/500 - 1/2000. Immunohistochemistry: 1/100 - 1/300. ELISA: 1/40000. Not yet tested in other applications.
<b>Immunogen</b>	The antiserum was produced against synthesized peptide derived from human BMP-3. AA range:257-306
<b>Specificity</b>	BMP-3 Polyclonal Antibody detects endogenous levels of BMP-3 protein.
<b>Formulation</b>	Liquid in PBS containing 50% glycerol, 0.5% BSA and 0.02% sodium azide..
<b>Storage</b>	Store at -20°C. Avoid repeated freeze-thaw cycles.
<b>Protein Name</b>	Bone morphogenetic protein 3
<b>Gene Name</b>	BMP3
<b>Cellular localization</b>	Secreted.
<b>Purification</b>	The antibody was affinity-purified from rabbit antiserum by affinity-chromatography using epitope-specific immunogen.
<b>Clonality</b>	Polyclonal

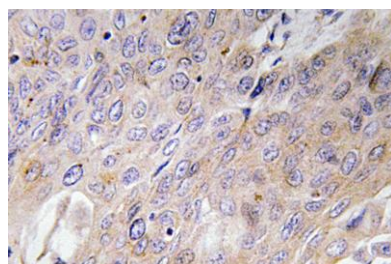
<b>Concentration</b>	1 mg/ml
<b>Observed band</b>	53kD
<b>Human Gene ID</b>	651
<b>Human Swiss-Prot Number</b>	P12645
<b>Alternative Names</b>	BMP3; BMP3A; Bone morphogenetic protein 3; BMP-3; Bone morphogenetic protein 3A; BMP-3A; Osteogenin

### Background

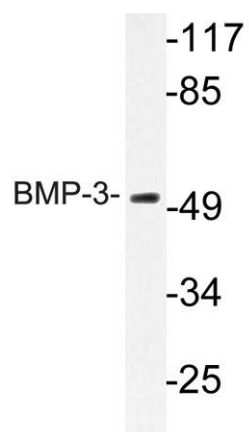
This gene encodes a secreted ligand of the TGF-beta (transforming growth factor-beta) superfamily of proteins. Ligands of this family bind various TGF-beta receptors leading to recruitment and activation of SMAD family transcription factors that regulate gene expression. The encoded preproprotein is proteolytically processed to generate each subunit of the disulfide-linked homodimer. This protein suppresses osteoblast differentiation, and negatively regulates bone density, by modulating TGF-beta receptor availability to other ligands. [provided by RefSeq, Jul 2016],



**Western Blot analysis of various cells using BMP-3 Polyclonal Antibody diluted at 1:2000**



**Immunohistochemistry analysis of BMP-3 antibody in paraffin-embedded human lung carcinoma tissue.**



Western blot analysis of lysate from HeLa cells, using BMP-3 antibody.