

BCSC-1 rabbit pAb**Cat#: orb764641 (Manual)**

For research use only. Not intended for diagnostic use.

Product Name	BCSC-1 rabbit pAb
Host species	Rabbit
Applications	WB;ELISA
Species Cross-Reactivity	Human;Rat;Mouse;
Recommended dilutions	Western Blot: 1/500 - 1/2000. ELISA: 1/20000. Not yet tested in other applications.
Immunogen	The antiserum was produced against synthesized peptide derived from human LHR2A. AA range:371-420
Specificity	BCSC-1 Polyclonal Antibody detects endogenous levels of BCSC-1 protein.
Formulation	Liquid in PBS containing 50% glycerol, 0.5% BSA and 0.02% sodium azide..
Storage	Store at -20°C. Avoid repeated freeze-thaw cycles.
Protein Name	von Willebrand factor A domain-containing protein 5A
Gene Name	VWA5A
Cellular localization	nucleus,nucleoplasm,
Purification	The antibody was affinity-purified from rabbit antiserum by affinity-chromatography using epitope-specific immunogen.
Clonality	Polyclonal

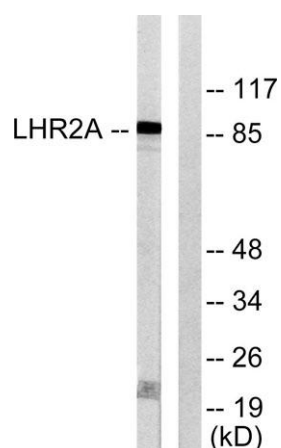
Concentration	1 mg/ml
Observed band	86kD
Human Gene ID	4013
Human Swiss-Prot Number	O00534
Alternative Names	VWA5A; BCSC1; LOH11CR2A; von Willebrand factor A domain-containing protein 5A; Breast cancer suppressor candidate 1; BCSC-1; Loss of heterozygosity 11 chromosomal region 2 gene A protein

Background

VWA5A (von Willebrand factor A domain containing 5A), also known as BCSC-1 (breast cancer suppressor candidate 1) or LOH11CR2A (loss of heterozygosity 11 chromosomal region 2 gene A protein), is a 786 amino acid protein containing one VIT domain and one VWFA domain. VWA5A is expressed at low levels in various tissues, with no expression found in 80% of tumor cell lines. Likely acting as a tumor suppressor gene, deletion of VWA5A leads to loss of heterozygosity (LOH) in breast and ovarian tumors, and may have an important role as a potential gene therapy target. Abnormal expression of VWA5A may lead to an increase in adhesion of CNE-2L2 cells associated with an increase in expression of E-cadherin, alpha-catenin, and p53, resulting in a decrease of malignant activity in cells with ectopic expression of VWA5A. Existing as four alternatively spliced isoforms, the gene encoding VWA5A maps to human chromosome 11q24.2.



Western Blot analysis of various cells using BCSC-1 Polyclonal Antibody



Western blot analysis of lysates from 293 cells, using LHR2A Antibody. The lane on the right is blocked with the synthesized peptide.