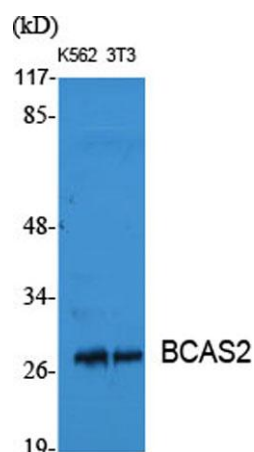


**BCAS2 rabbit pAb****Cat#: orb764630 (Manual)**

For research use only. Not intended for diagnostic use.

<b>Product Name</b>	BCAS2 rabbit pAb
<b>Host species</b>	Rabbit
<b>Applications</b>	WB;ELISA
<b>Species Cross-Reactivity</b>	Human;Mouse;Rat;Monkey
<b>Recommended dilutions</b>	Western Blot: 1/500 - 1/2000. ELISA: 1/5000. Not yet tested in other applications.
<b>Immunogen</b>	The antiserum was produced against synthesized peptide derived from human BCAS2. AA range:176-225
<b>Specificity</b>	BCAS2 Polyclonal Antibody detects endogenous levels of BCAS2 protein.
<b>Formulation</b>	Liquid in PBS containing 50% glycerol, 0.5% BSA and 0.02% sodium azide..
<b>Storage</b>	Store at -20°C. Avoid repeated freeze-thaw cycles.
<b>Protein Name</b>	Pre-mRNA-splicing factor SPF27
<b>Gene Name</b>	BCAS2
<b>Cellular localization</b>	Nucleus . Nucleus, nucleolus .
<b>Purification</b>	The antibody was affinity-purified from rabbit antiserum by affinity-chromatography using epitope-specific immunogen.
<b>Clonality</b>	Polyclonal

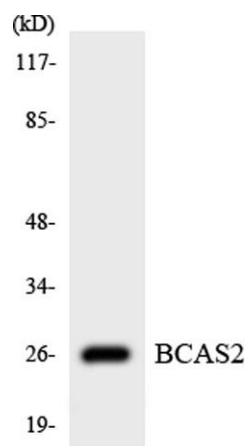
<b>Concentration</b>	1 mg/ml
<b>Observed band</b>	27kD
<b>Human Gene ID</b>	10286
<b>Human Swiss-Prot Number</b>	O75934
<b>Alternative Names</b>	BCAS2; DAM1; Pre-mRNA-splicing factor SPF27; Breast carcinoma-amplified sequence 2; DNA amplified in mammary carcinoma 1 protein; Spliceosome-associated protein SPF 27
<b>Background</b>	function:Involved in mRNA splicing.,similarity:Belongs to the SPF27 family.,subunit:Associated with the spliceosome.,tissue specificity:Ubiquitously expressed.,



Western Blot analysis of various cells using BCAS2 Polyclonal Antibody diluted at 1:1000 cells nucleus extracted by Minute TM Cytoplasmic and Nuclear Fractionation kit (SC-003, Invent biotech, MN, USA).



Western Blot analysis of COS7 cells using BCAS2 Polyclonal Antibody diluted at 1:1000 cells nucleus extracted by Minute TM Cytoplasmic and Nuclear Fractionation kit (SC-003, Invent biotech, MN, USA).



Western blot analysis of the lysates from HUVEC cells using BCAS2 antibody.