

## BCA3 rabbit pAb

**Cat#: orb764629 (Manual)**

For research use only. Not intended for diagnostic use.

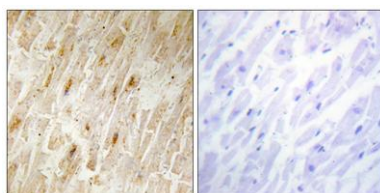
<b>Product Name</b>	BCA3 rabbit pAb
<b>Host species</b>	Rabbit
<b>Applications</b>	WB;IHC;IF;ELISA
<b>Species Cross-Reactivity</b>	Human;Rat;Mouse;
<b>Recommended dilutions</b>	Western Blot: 1/500 - 1/2000. Immunohistochemistry: 1/100 - 1/300. ELISA: 1/20000. Not yet tested in other applications.
<b>Immunogen</b>	The antiserum was produced against synthesized peptide derived from human BCA3. AA range:111-160
<b>Specificity</b>	BCA3 Polyclonal Antibody detects endogenous levels of BCA3 protein.
<b>Formulation</b>	Liquid in PBS containing 50% glycerol, 0.5% BSA and 0.02% sodium azide..
<b>Storage</b>	Store at -20°C. Avoid repeated freeze-thaw cycles.
<b>Protein Name</b>	A-kinase-interacting protein 1
<b>Gene Name</b>	AKIP1
<b>Cellular localization</b>	Nucleus . Locates to punctate spots.
<b>Purification</b>	The antibody was affinity-purified from rabbit antiserum by affinity-chromatography using epitope-specific immunogen.
<b>Clonality</b>	Polyclonal

<b>Concentration</b>	1 mg/ml
<b>Observed band</b>	26kD
<b>Human Gene ID</b>	56672
<b>Human Swiss-Prot Number</b>	Q9NQ31
<b>Alternative Names</b>	AKIP1; BCA3; C11orf17; A-kinase-interacting protein 1; Breast cancer-associated gene 3 protein; PKA-interacting protein; Proline-rich protein BCA3

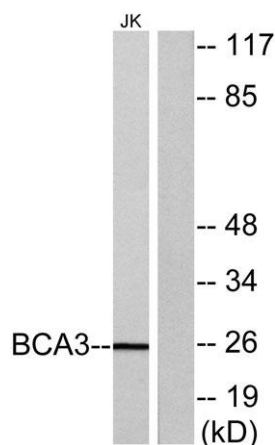
**Background** This gene encodes a nuclear protein that interacts with protein kinase A catalytic subunit, and regulates the effect of the cAMP-dependent protein kinase signaling pathway on the NF-kappa-B activation cascade. Alternatively spliced transcript variants have been described for this gene. [provided by RefSeq, Oct 2011],



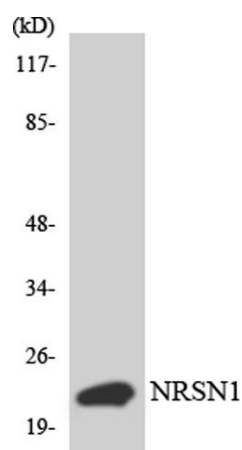
**Western Blot analysis of various cells using BCA3 Polyclonal Antibody cells nucleus extracted by Minute TM Cytoplasmic and Nuclear Fractionation kit (SC-003, Invent biotech, MN, USA).**



**Immunohistochemistry analysis of paraffin-embedded human heart tissue, using BCA3 Antibody. The picture on the right is blocked with the synthesized peptide.**



Western blot analysis of lysates from Jurkat cells, using BCA3 Antibody. The lane on the right is blocked with the synthesized peptide.



Western blot analysis of the lysates from HepG2 cells using BCA3 antibody.