

BAM32 rabbit pAb**Cat#: orb764622 (Manual)**

For research use only. Not intended for diagnostic use.

Product Name	BAM32 rabbit pAb
Host species	Rabbit
Applications	WB;IHC;IF;ELISA
Species Cross-Reactivity	Human;Mouse
Recommended dilutions	Western Blot: 1/500 - 1/2000. Immunohistochemistry: 1/100 - 1/300. ELISA: 1/10000. Not yet tested in other applications.
Immunogen	The antiserum was produced against synthesized peptide derived from human DAPPI. AA range:105-154
Specificity	BAM32 Polyclonal Antibody detects endogenous levels of BAM32 protein.
Formulation	Liquid in PBS containing 50% glycerol, 0.5% BSA and 0.02% sodium azide..
Storage	Store at -20°C. Avoid repeated freeze-thaw cycles.
Protein Name	Dual adapter for phosphotyrosine and 3-phosphotyrosine and 3-phosphoinositide
Gene Name	DAPPI
Cellular localization	Cytoplasm . Membrane ; Peripheral membrane protein . Membrane-associated after cell stimulation leading to its translocation.
Purification	The antibody was affinity-purified from rabbit antiserum by affinity-chromatography using epitope-specific immunogen.

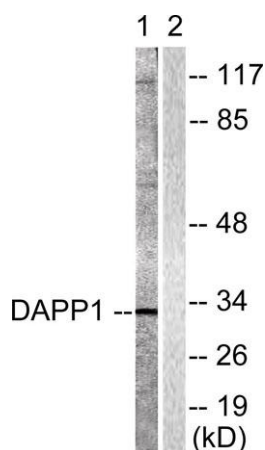
Clonality	Polyclonal
Concentration	1 mg/ml
Observed band	32kD
Human Gene ID	27071
Human Swiss-Prot Number	Q9UN19
Alternative Names	DAPP1; BAM32; HSPC066; Dual adapter for phosphotyrosine and 3-phosphotyrosine and 3-phosphoinositide; hDAPP1; B lymphocyte adapter protein Bam32; B-cell adapter molecule of 32 kDa

Background

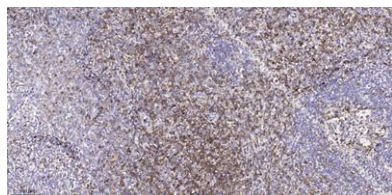
function: May act as a B-cell-associated adapter that regulates B-cell antigen receptor (BCR)-signaling downstream of PI3K., induction: Upon B-cell activation., PTM: Phosphorylated on tyrosine residues., similarity: Contains 1 PH domain., similarity: Contains 1 SH2 domain., subcellular location: Membrane-associated after cell stimulation leading to its translocation., subunit: Interacts with PtdIns(3,4,5)P3 and PLCG2. In vitro, interacts with PtdIns(3,4)P2., tissue specificity: Highly expressed in placenta and lung, followed by brain, heart, kidney, liver, pancreas and skeletal muscle. Expressed by B-lymphocytes, but not T-lymphocytes or nonhematopoietic cells.,



Western Blot analysis of various cells using BAM32 Polyclonal Antibody



Western blot analysis of lysates from 293 cells, treated with Insulin 0.01U/ml 2', using DAPP1 Antibody. The lane on the right is blocked with the synthesized peptide.



Immunohistochemical analysis of paraffin-embedded human tonsil. 1, Tris-EDTA, pH 9.0 was used for antigen retrieval. 2 Antibody was diluted at 1:200 (4° overnight). 3, Secondary antibody was diluted at 1:200 (room temperature, 45 min).