

**ATPAF2 rabbit pAb****Cat#: orb764606 (Manual)**

For research use only. Not intended for diagnostic use.

<b>Product Name</b>	ATPAF2 rabbit pAb
<b>Host species</b>	Rabbit
<b>Applications</b>	WB;ELISA
<b>Species Cross-Reactivity</b>	Human;Mouse
<b>Recommended dilutions</b>	Western Blot: 1/500 - 1/2000. ELISA: 1/40000. Not yet tested in other applications.
<b>Immunogen</b>	The antiserum was produced against synthesized peptide derived from human ATPAF2. AA range:21-70
<b>Specificity</b>	ATPAF2 Polyclonal Antibody detects endogenous levels of ATPAF2 protein.
<b>Formulation</b>	Liquid in PBS containing 50% glycerol, 0.5% BSA and 0.02% sodium azide..
<b>Storage</b>	Store at -20°C. Avoid repeated freeze-thaw cycles.
<b>Protein Name</b>	ATP synthase mitochondrial F1 complex assembly factor 2
<b>Gene Name</b>	ATPAF2
<b>Cellular localization</b>	Mitochondrion .
<b>Purification</b>	The antibody was affinity-purified from rabbit antiserum by affinity-chromatography using epitope-specific immunogen.
<b>Clonality</b>	Polyclonal

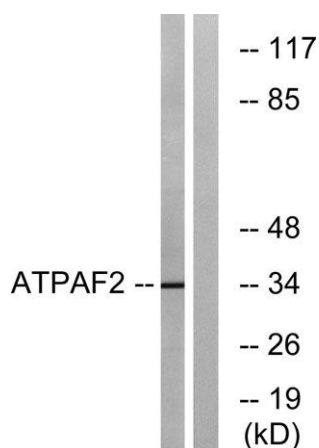
<b>Concentration</b>	1 mg/ml
<b>Observed band</b>	35kD
<b>Human Gene ID</b>	91647
<b>Human Swiss-Prot Number</b>	Q8N5M1
<b>Alternative Names</b>	ATPAF2; ATP12; LP3663; ATP synthase mitochondrial F1 complex assembly factor 2; ATP12 homolog

### Background

ATP synthase mitochondrial F1 complex assembly factor 2(ATPAF2) Homo sapiens This gene encodes an assembly factor for the F(1) component of the mitochondrial ATP synthase. This protein binds specifically to the F1 alpha subunit and is thought to prevent this subunit from forming nonproductive homooligomers during enzyme assembly. This gene is located within the Smith-Magenis syndrome region on chromosome 17. An alternatively spliced transcript variant has been described, but its biological validity has not been determined. [provided by RefSeq, Jul 2008],



Western Blot analysis of various cells using ATPAF2 Polyclonal Antibody



Western blot analysis of lysates from Jurkat cells, using ATPAF2 Antibody. The lane on the right is blocked with the synthesized peptide.



Explore. Bioreagents.

[www.biorbyt.com](http://www.biorbyt.com)