

**ATF-7 rabbit pAb****Cat#: orb764600 (Manual)**

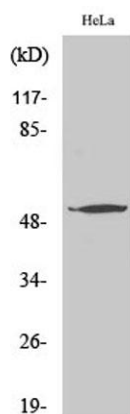
For research use only. Not intended for diagnostic use.

<b>Product Name</b>	ATF-7 rabbit pAb
<b>Host species</b>	Rabbit
<b>Applications</b>	WB;IHC;IF;ELISA
<b>Species Cross-Reactivity</b>	Human;Mouse
<b>Recommended dilutions</b>	Western Blot: 1/500 - 1/2000. Immunohistochemistry: 1/100 - 1/300. Immunofluorescence: 1/200 - 1/1000. ELISA: 1/20000. Not yet tested in other applications.
<b>Immunogen</b>	The antiserum was produced against synthesized peptide derived from human ATF7. AA range:41-90
<b>Specificity</b>	ATF-7 Polyclonal Antibody detects endogenous levels of ATF-7 protein.
<b>Formulation</b>	Liquid in PBS containing 50% glycerol, 0.5% BSA and 0.02% sodium azide..
<b>Storage</b>	Store at -20°C. Avoid repeated freeze-thaw cycles.
<b>Protein Name</b>	Cyclic AMP-dependent transcription factor ATF-7
<b>Gene Name</b>	ATF7
<b>Cellular localization</b>	Nucleus . Nucleus, nucleoplasm . Chromosome, telomere . Mainly nucleoplasmic. Restricted distribution to the perinuclear region. The sumoylated form locates to the nuclear periphery.; [Isoform 5]: Cytoplasm .
<b>Purification</b>	The antibody was affinity-purified from rabbit antiserum by affinity-chromatography using epitope-specific immunogen.

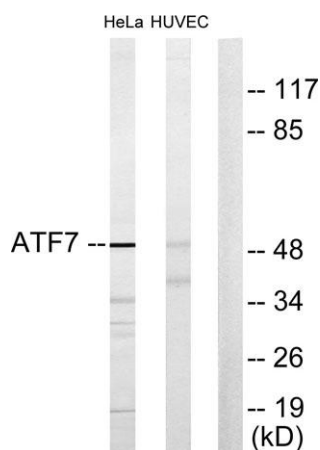
<b>Clonality</b>	Polyclonal
<b>Concentration</b>	1 mg/ml
<b>Observed band</b>	52kD
<b>Human Gene ID</b>	11016
<b>Human Swiss-Prot Number</b>	P17544
<b>Alternative Names</b>	ATF7; ATFA; Cyclic AMP-dependent transcription factor ATF-7; cAMP-dependent transcription factor ATF-7; Activating transcription factor 7; Transcription factor ATF-A

### Background

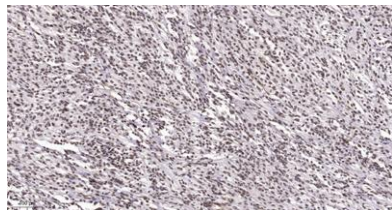
function: Binds the cAMP response element (CRE) (consensus: 5'-GTGACGT[AG][AG]-3'), a sequence present in many viral and cellular promoters., similarity: Belongs to the bZIP family., similarity: Contains 1 bZIP domain., similarity: Contains 1 C2H2-type zinc finger., subunit: Binds DNA as a dimer.,



Western Blot analysis of various cells using ATF-7 Polyclonal Antibody



Western blot analysis of lysates from HeLa and HUVEC cells, using ATF7 Antibody. The lane on the right is blocked with the synthesized peptide.



**Immunohistochemical analysis of paraffin-embedded human Small intestinal stromal tumor.** 1, Tris-EDTA,pH9.0 was used for antigen retrieval. 2 Antibody was diluted at 1:200(4° overnight.3,Secondary antibody was diluted at 1:200(room temperature, 45min).