

**AR- $\beta$ 1 rabbit pAb****Cat#: orb764587 (Manual)**

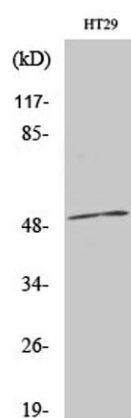
For research use only. Not intended for diagnostic use.

<b>Product Name</b>	AR- $\beta$ 1 rabbit pAb
<b>Host species</b>	Rabbit
<b>Applications</b>	WB;IHC;IF;ELISA
<b>Species Cross-Reactivity</b>	Human;Mouse;Rat
<b>Recommended dilutions</b>	Western Blot: 1/500 - 1/2000. Immunohistochemistry: 1/100 - 1/300. Immunofluorescence: 1/200 - 1/1000. ELISA: 1/20000. Not yet tested in other applications.
<b>Immunogen</b>	The antiserum was produced against synthesized peptide derived from human ADRB1. AA range:281-330
<b>Specificity</b>	AR- $\beta$ 1 Polyclonal Antibody detects endogenous levels of AR- $\beta$ 1 protein.
<b>Formulation</b>	Liquid in PBS containing 50% glycerol, 0.5% BSA and 0.02% sodium azide..
<b>Storage</b>	Store at -20°C. Avoid repeated freeze-thaw cycles.
<b>Protein Name</b>	Beta-1 adrenergic receptor
<b>Gene Name</b>	ADRB1
<b>Cellular localization</b>	Cell membrane ; Multi-pass membrane protein . Early endosome. Colocalizes with RAPGEF2 at the plasma membrane (By similarity). Localized at the plasma membrane. Found in the Golgi upon GOPC overexpression. .
<b>Purification</b>	The antibody was affinity-purified from rabbit antiserum by affinity-chromatography using epitope-specific immunogen.

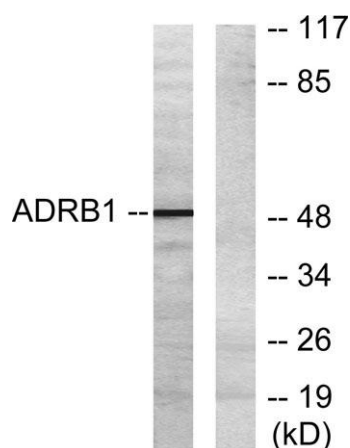
<b>Clonality</b>	Polyclonal
<b>Concentration</b>	1 mg/ml
<b>Observed band</b>	51kD
<b>Human Gene ID</b>	153
<b>Human Swiss-Prot Number</b>	P08588
<b>Alternative Names</b>	ADRB1; ADRB1R; B1AR; Beta-1 adrenergic receptor; Beta-1 adrenoreceptor; Beta-1 adrenoceptor

### Background

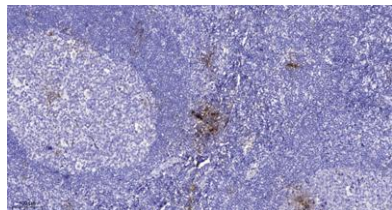
The adrenergic receptors (subtypes alpha 1, alpha 2, beta 1, and beta 2) are a prototypic family of guanine nucleotide binding regulatory protein-coupled receptors that mediate the physiological effects of the hormone epinephrine and the neurotransmitter norepinephrine. Specific polymorphisms in this gene have been shown to affect the resting heart rate and can be involved in heart failure. [provided by RefSeq, Jul 2008],



Western Blot analysis of various cells using AR-β1 Polyclonal Antibody



Western blot analysis of lysates from HT-29 cells, using ADRB1 Antibody. The lane on the right is blocked with the synthesized peptide.



**Immunohistochemical analysis of paraffin-embedded human tonsil. 1, Antibody was diluted at 1:200(4° overnight). 2, Tris-EDTA,pH9.0 was used for antigen retrieval. 3,Secondary antibody was diluted at 1:200(room temperature, 45min).**