

Annexin X rabbit pAb**Cat#: orb764534 (Manual)**

For research use only. Not intended for diagnostic use.

Product Name	Annexin X rabbit pAb
Host species	Rabbit
Applications	WB;ELISA
Species Cross-Reactivity	Human;Mouse
Recommended dilutions	Western Blot: 1/500 - 1/2000. ELISA: 1/20000. Not yet tested in other applications.
Immunogen	The antiserum was produced against synthesized peptide derived from human ANXA10. AA range:261-310
Specificity	Annexin X Polyclonal Antibody detects endogenous levels of Annexin X protein.
Formulation	Liquid in PBS containing 50% glycerol, 0.5% BSA and 0.02% sodium azide..
Storage	Store at -20°C. Avoid repeated freeze-thaw cycles.
Protein Name	Annexin A10
Gene Name	ANXA10
Cellular localization	mitochondrion,
Purification	The antibody was affinity-purified from rabbit antiserum by affinity-chromatography using epitope-specific immunogen.
Clonality	Polyclonal

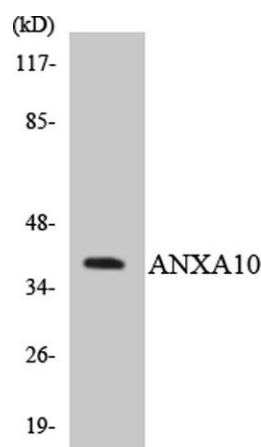
Concentration	1 mg/ml
Observed band	38kD
Human Gene ID	11199
Human Swiss-Prot Number	Q9UJ72
Alternative Names	ANXA10; ANX14; Annexin A10; Annexin-10; Annexin-14

Background

This gene encodes a member of the annexin family. Members of this calcium-dependent phospholipid-binding protein family play a role in the regulation of cellular growth and in signal transduction pathways. The function of this gene has not yet been determined. [provided by RefSeq, Jul 2008],



Western Blot analysis of various cells using Annexin X Polyclonal Antibody



Western blot analysis of the lysates from Jurkat cells using ANXA10 antibody.