

## Amylin rabbit pAb

**Cat#: orb764526 (Manual)**

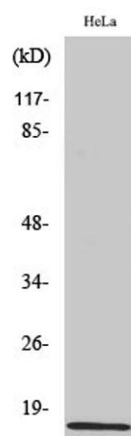
For research use only. Not intended for diagnostic use.

<b>Product Name</b>	Amylin rabbit pAb
<b>Host species</b>	Rabbit
<b>Applications</b>	WB;IHC;IF;ELISA
<b>Species Cross-Reactivity</b>	Human;Rat;Mouse;
<b>Recommended dilutions</b>	Western Blot: 1/500 - 1/2000. Immunohistochemistry: 1/100 - 1/300. Immunofluorescence: 1/200 - 1/1000. ELISA: 1/10000. Not yet tested in other applications.
<b>Immunogen</b>	The antiserum was produced against synthesized peptide derived from human Amylin. AA range:1-50
<b>Specificity</b>	Amylin Polyclonal Antibody detects endogenous levels of Amylin protein.
<b>Formulation</b>	Liquid in PBS containing 50% glycerol, 0.5% BSA and 0.02% sodium azide..
<b>Storage</b>	Store at -20°C. Avoid repeated freeze-thaw cycles.
<b>Protein Name</b>	Islet amyloid polypeptide
<b>Gene Name</b>	IAPP
<b>Cellular localization</b>	Secreted .
<b>Purification</b>	The antibody was affinity-purified from rabbit antiserum by affinity-chromatography using epitope-specific immunogen.
<b>Clonality</b>	Polyclonal

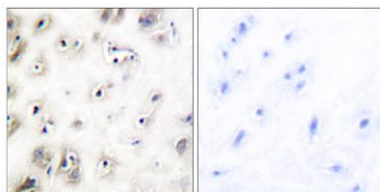
<b>Concentration</b>	1 mg/ml
<b>Observed band</b>	25kD
<b>Human Gene ID</b>	3375
<b>Human Swiss-Prot Number</b>	P10997
<b>Alternative Names</b>	IAPP; Islet amyloid polypeptide; Amylin; Diabetes-associated peptide; DAP; Insulinoma amyloid peptide

### Background

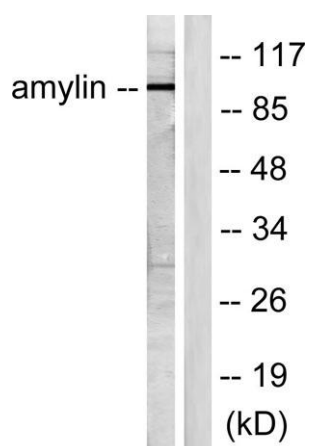
islet amyloid polypeptide(IAPP) Homo sapiens This gene encodes a member of the calcitonin family of peptide hormones. This hormone is released from pancreatic beta cells following food intake to regulate blood glucose levels and act as a satiation signal. Human patients with type 1 and advanced type 2 diabetes exhibit reduced levels of the encoded hormone in blood and pancreas. This protein also exhibits a bactericidal, antimicrobial activity. [provided by RefSeq, Jul 2016],



**Western Blot analysis of various cells using Amylin Polyclonal Antibody diluted at 1:1000**



**Immunohistochemistry analysis of paraffin-embedded human brain tissue, using Amylin Antibody. The picture on the right is blocked with the synthesized peptide.**



Western blot analysis of lysates from HeLa cells, treated with EGF 200ng/ml 30', using Amylin Antibody. The lane on the right is blocked with the synthesized peptide.