

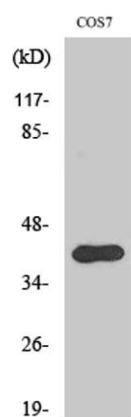
AMID rabbit pAb**Cat#: orb764520 (Manual)**

For research use only. Not intended for diagnostic use.

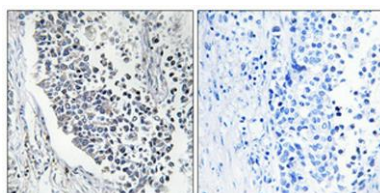
Product Name	AMID rabbit pAb
Host species	Rabbit
Applications	WB;IHC;IF;ELISA
Species Cross-Reactivity	Human;Mouse;Monkey
Recommended dilutions	Western Blot: 1/500 - 1/2000. Immunohistochemistry: 1/100 - 1/300. Immunofluorescence: 1/200 - 1/1000. ELISA: 1/40000. Not yet tested in other applications.
Immunogen	The antiserum was produced against synthesized peptide derived from human AIFM2. AA range:141-190
Specificity	AMID Polyclonal Antibody detects endogenous levels of AMID protein.
Formulation	Liquid in PBS containing 50% glycerol, 0.5% BSA and 0.02% sodium azide..
Storage	Store at -20°C. Avoid repeated freeze-thaw cycles.
Protein Name	Apoptosis-inducing factor 2
Gene Name	AIFM2
Cellular localization	Lipid droplet . Cell membrane ; Lipid-anchor . Cytoplasm . Mitochondrion membrane . Nucleus .
Purification	The antibody was affinity-purified from rabbit antiserum by affinity-chromatography using epitope-specific immunogen.
Clonality	Polyclonal

Concentration	1 mg/ml
Observed band	41kD
Human Gene ID	84883
Human Swiss-Prot Number	Q9BRQ8
Alternative Names	AIFM2; AMID; PRG3; Apoptosis-inducing factor 2; Apoptosis-inducing factor homologous mitochondrion-associated inducer of death; Apoptosis-inducing factor-like mitochondrion-associated inducer of death; p53-responsive gene 3 protein

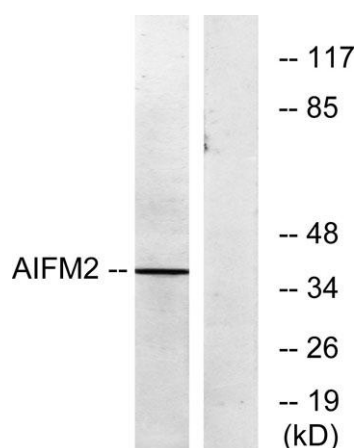
Background This gene encodes a flavoprotein oxidoreductase that binds single stranded DNA and is thought to contribute to apoptosis in the presence of bacterial and viral DNA. The expression of this gene is also found to be induced by tumor suppressor protein p53 in colon cancer cells. [provided by RefSeq, Nov 2010],



Western Blot analysis of various cells using AMID Polyclonal Antibody



Immunohistochemical analysis of paraffin-embedded Human lung cancer. Antibody was diluted at 1:100(4° overnight). High-pressure and temperature Tris-EDTA,pH8.0 was used for antigen retrieval. Negative contrl (right) obtained from antibody was pre-absorbe



Western blot analysis of lysates from COS7 cells, using AIFM2 Antibody. The lane on the right is blocked with the synthesized peptide.