

ALMS1 rabbit pAb

Cat#: orb764517 (Manual)

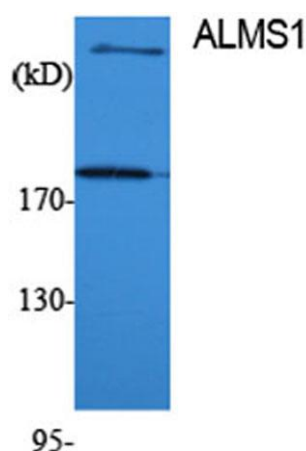
For research use only. Not intended for diagnostic use.

Product Name	ALMS1 rabbit pAb
Host species	Rabbit
Applications	WB;IHC;IF;ELISA
Species Cross-Reactivity	Human;Rat;Mouse;
Recommended dilutions	Western Blot: 1/500 - 1/2000. Immunohistochemistry: 1/100 - 1/300. ELISA: 1/40000. Not yet tested in other applications.
Immunogen	Synthesized peptide derived from ALMS1 . at AA range: 1530-1610
Specificity	ALMS1 Polyclonal Antibody detects endogenous levels of ALMS1 protein.
Formulation	Liquid in PBS containing 50% glycerol, 0.5% BSA and 0.02% sodium azide..
Storage	Store at -20°C. Avoid repeated freeze-thaw cycles.
Protein Name	Alstrom syndrome protein 1
Gene Name	ALMS1
Cellular localization	Cytoplasm. Cytoplasm, cytoskeleton, microtubule organizing center, centrosome . Cytoplasm, cytoskeleton, cilium basal body. Cytoplasm, cytoskeleton, spindle pole. Associated with centrosomes and basal bodies at the base of primary cilia. Specifically loca
Purification	The antibody was affinity-purified from rabbit antiserum by affinity-chromatography using epitope-specific immunogen.

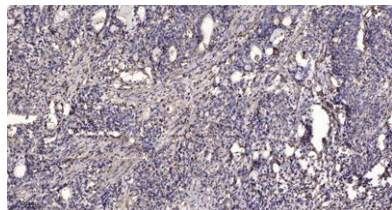
Clonality	Polyclonal
Concentration	1 mg/ml
Observed band	460kD
Human Gene ID	7840
Human Swiss-Prot Number	Q8TCU4
Alternative Names	ALMS1; KIAA0328; Alstrom syndrome protein 1

Background

This gene encodes a protein containing a large tandem-repeat domain as well as additional low complexity regions. The encoded protein functions in microtubule organization, particularly in the formation and maintenance of cilia. Mutations in this gene cause Alstrom syndrome. There is a pseudogene for this gene located adjacent in the same region of chromosome 2. Alternative splice variants have been described but their full length nature has not been determined. [provided by RefSeq, Apr 2014],



Western Blot analysis of various cells using ALMS1 Polyclonal Antibody



Immunohistochemical analysis of paraffin-embedded human Gastric adenocarcinoma. 1, Antibody was diluted at 1:200(4° overnight). 2, Tris-EDTA,pH9.0 was used for antigen retrieval. 3,Secondary antibody was diluted at 1:200(room temperature, 45min).