

AKR1A1 rabbit pAb**Cat#: orb764499 (Manual)**

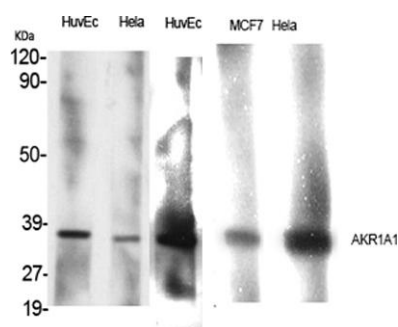
For research use only. Not intended for diagnostic use.

Product Name	AKR1A1 rabbit pAb
Host species	Rabbit
Applications	WB;ELISA
Species Cross-Reactivity	Human;Mouse;Rat
Recommended dilutions	Western Blot: 1/500 - 1/2000. ELISA: 1/40000. Not yet tested in other applications.
Immunogen	Synthesized peptide derived from AKR1A1 . at AA range: 250-330
Specificity	AKR1A1 Polyclonal Antibody detects endogenous levels of AKR1A1 protein.
Formulation	Liquid in PBS containing 50% glycerol, 0.5% BSA and 0.02% sodium azide..
Storage	Store at -20°C. Avoid repeated freeze-thaw cycles.
Protein Name	Alcohol dehydrogenase [NADP(+)]
Gene Name	AKR1A1
Cellular localization	Cytoplasm, cytosol . Apical cell membrane .
Purification	The antibody was affinity-purified from rabbit antiserum by affinity-chromatography using epitope-specific immunogen.
Clonality	Polyclonal

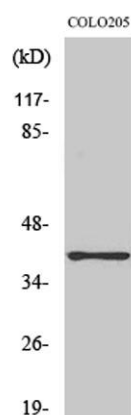
Concentration	1 mg/ml
Observed band	37kD
Human Gene ID	10327
Human Swiss-Prot Number	P14550
Alternative Names	AKR1A1; ALDR1; ALR; Alcohol dehydrogenase [NADP(+)]; Aldehyde reductase; Aldo-keto reductase family 1 member A1

Background

This gene encodes a member of the aldo/keto reductase superfamily, which consists of more than 40 known enzymes and proteins. This member, also known as aldehyde reductase, is involved in the reduction of biogenic and xenobiotic aldehydes and is present in virtually every tissue. Multiple alternatively spliced transcript variants of this gene exist, all encoding the same protein. [provided by RefSeq, Jan 2011],



Western Blot analysis of various cells using AKR1A1 Polyclonal Antibody



Western Blot analysis of NIH-3T3 cells using AKR1A1 Polyclonal Antibody