

AKAP 95 rabbit pAb**Cat#: orb764498 (Manual)**

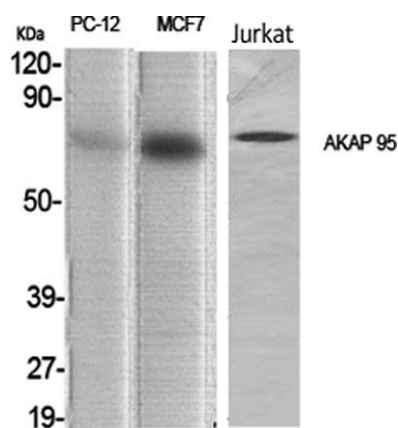
For research use only. Not intended for diagnostic use.

Product Name	AKAP 95 rabbit pAb
Host species	Rabbit
Applications	WB;IHC;IF;ELISA
Species Cross-Reactivity	Human;Mouse;Rat
Recommended dilutions	Western Blot: 1/500 - 1/2000. Immunohistochemistry: 1/100 - 1/300. Immunofluorescence: 1/200 - 1/1000. ELISA: 1/20000. Not yet tested in other applications.
Immunogen	The antiserum was produced against synthesized peptide derived from human AKAP8. AA range:331-380
Specificity	AKAP 95 Polyclonal Antibody detects endogenous levels of AKAP 95 protein.
Formulation	Liquid in PBS containing 50% glycerol, 0.5% BSA and 0.02% sodium azide..
Storage	Store at -20°C. Avoid repeated freeze-thaw cycles.
Protein Name	A-kinase anchor protein 8
Gene Name	AKAP8
Cellular localization	Nucleus . Nucleus matrix . Nucleus, nucleolus . Cytoplasm . Associated with the nuclear matrix in interphase and redistributes mostly to chromatin at mitosis. However, mitotic chromatin localization has been questioned. Upon nuclear reassembly at the end of mitosis, is sequestered into the daughter nuclei where it re-acquires an interphase distribution. Exhibits partial localization to the nucleolus in interphase, where it colocalizes with UBTF/UBF, suggesting localization to the fibrillary center and/or to the dense fibrillary component. Colocalizes with GJA1 at the nuclear membrane specifically during cell cycle G1/S phase. .

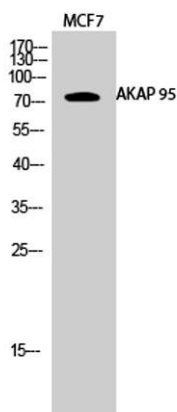
Purification	The antibody was affinity-purified from rabbit antiserum by affinity-chromatography using epitope-specific immunogen.
Clonality	Polyclonal
Concentration	1 mg/ml
Observed band	76kD
Human Gene ID	10270
Human Swiss-Prot Number	O43823
Alternative Names	AKAP8; AKAP95; A-kinase anchor protein 8; AKAP-8; A-kinase anchor protein 95 kDa; AKAP 95

Background

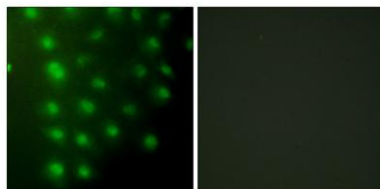
This gene encodes a member of the A-kinase anchor protein family. A-kinase anchor proteins are scaffold proteins that contain a binding domain for the RI/RII subunit of protein kinase A (PKA) and recruit PKA and other signaling molecules to specific subcellular locations. This gene encodes a nuclear A-kinase anchor protein that binds to the RII alpha subunit of PKA and may play a role in chromosome condensation during mitosis by targeting PKA and the condensin complex to chromatin. A pseudogene of this gene is located on the short arm of chromosome 9. [provided by RefSeq, May 2011],



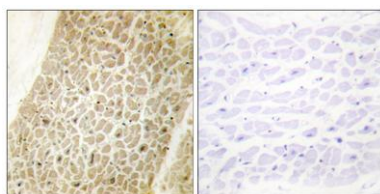
Western Blot analysis of various cells using AKAP 95 Polyclonal Antibody diluted at 1:1000 cells nucleus extracted by Minute TM Cytoplasmic and Nuclear Fractionation kit (SC-003, Invent biotech, MN, USA).



Western Blot analysis of MCF7 cells using AKAP 95 Polyclonal Antibody diluted at 1:1000 cells nucleus extracted by Minute TM Cytoplasmic and Nuclear Fractionation kit (SC-003, Invent biotech, MN, USA).



Immunofluorescence analysis of HUVEC cells, using AKAP8 Antibody. The picture on the right is blocked with the synthesized peptide.



Immunohistochemistry analysis of paraffin-embedded human heart tissue, using AKAP8 Antibody. The picture on the right is blocked with the synthesized peptide.