

AIFL rabbit pAb

Cat#: orb764489 (Manual)

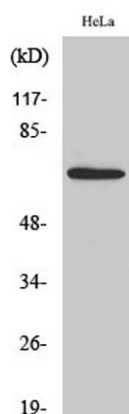
For research use only. Not intended for diagnostic use.

Product Name	AIFL rabbit pAb
Host species	Rabbit
Applications	WB;IHC;IF;ELISA
Species Cross-Reactivity	Human;Mouse
Recommended dilutions	Western Blot: 1/500 - 1/2000. Immunohistochemistry: 1/100 - 1/300. Immunofluorescence: 1/200 - 1/1000. ELISA: 1/40000. Not yet tested in other applications.
Immunogen	The antiserum was produced against synthesized peptide derived from human AIFM3. AA range:10-59
Specificity	AIFL Polyclonal Antibody detects endogenous levels of AIFL protein.
Formulation	Liquid in PBS containing 50% glycerol, 0.5% BSA and 0.02% sodium azide..
Storage	Store at -20°C. Avoid repeated freeze-thaw cycles.
Protein Name	Apoptosis-inducing factor 3
Gene Name	AIFM3
Cellular localization	Mitochondrion . Does not translocate to the nucleus upon induction of apoptosis.
Purification	The antibody was affinity-purified from rabbit antiserum by affinity-chromatography using epitope-specific immunogen.
Clonality	Polyclonal

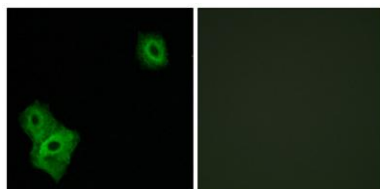
Concentration	1 mg/ml
Observed band	67kD
Human Gene ID	150209
Human Swiss-Prot Number	Q96NN9
Alternative Names	AIFM3; AIFL; Apoptosis-inducing factor 3; Apoptosis-inducing factor-like protein

Background

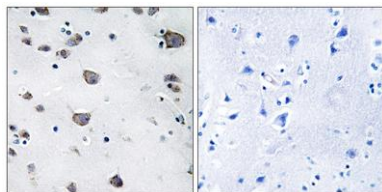
domain:The Rieske domain induces apoptosis.,function:Induces apoptosis through a caspase dependent pathway. Reduces mitochondrial membrane potential.,similarity:Belongs to the FAD-dependent oxidoreductase family.,similarity:Contains 1 Rieske domain.,subcellular location:Does not translocate to the nucleus upon induction of apoptosis.,tissue specificity:Ubiquitous. Expressed in bone marrow, cerebral cortex, liver, ovary, thymus, thyroid gland and tongue (at protein level).,



Western Blot analysis of various cells using AIFL Polyclonal Antibody



Immunofluorescence analysis of A549 cells, using AIFM3 Antibody. The picture on the right is blocked with the synthesized peptide.



Immunohistochemistry analysis of paraffin-embedded human brain, using AIFM3 Antibody. The picture on the right is blocked with the synthesized peptide.