

ADCK5 rabbit pAb**Cat#: orb764478 (Manual)**

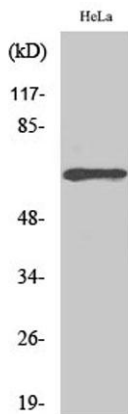
For research use only. Not intended for diagnostic use.

Product Name	ADCK5 rabbit pAb
Host species	Rabbit
Applications	WB;IF;ELISA
Species Cross-Reactivity	Human;Rat;Mouse;
Recommended dilutions	Western Blot: 1/500 - 1/2000. Immunofluorescence: 1/200 - 1/1000. ELISA: 1/20000. Not yet tested in other applications.
Immunogen	The antiserum was produced against synthesized peptide derived from human ADCK5. AA range:151-200
Specificity	ADCK5 Polyclonal Antibody detects endogenous levels of ADCK5 protein.
Formulation	Liquid in PBS containing 50% glycerol, 0.5% BSA and 0.02% sodium azide..
Storage	Store at -20°C. Avoid repeated freeze-thaw cycles.
Protein Name	Uncharacterized aarF domain-containing protein kinase 5
Gene Name	ADCK5
Cellular localization	Membrane ; Single-pass membrane protein .
Purification	The antibody was affinity-purified from rabbit antiserum by affinity-chromatography using epitope-specific immunogen.
Clonality	Polyclonal

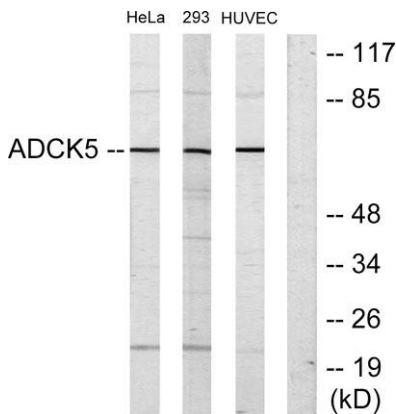
Concentration	1 mg/ml
Observed band	66kD
Human Gene ID	203054
Human Swiss-Prot Number	Q3MIX3
Alternative Names	ADCK5; Uncharacterized aarF domain-containing protein kinase 5

Background

function: The function of this protein is not yet clear. It is not known if it has protein kinase activity and what type of substrate it would phosphorylate (Ser, Thr or Tyr).,similarity: Belongs to the protein kinase superfamily. ADCK protein kinase family.,similarity: Contains 1 protein kinase domain.,



Western Blot analysis of various cells using ADCK5 Polyclonal Antibody



Western blot analysis of lysates from HeLa, 293, and HUVEC cells, using ADCK5 Antibody. The lane on the right is blocked with the synthesized peptide.