

**ADAM32 rabbit pAb****Cat#: orb764473 (Manual)**

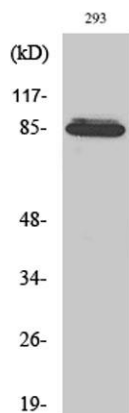
For research use only. Not intended for diagnostic use.

<b>Product Name</b>	ADAM32 rabbit pAb
<b>Host species</b>	Rabbit
<b>Applications</b>	WB;ELISA
<b>Species Cross-Reactivity</b>	Human;Rat;Mouse;
<b>Recommended dilutions</b>	Western Blot: 1/500 - 1/2000. ELISA: 1/40000. Not yet tested in other applications.
<b>Immunogen</b>	Synthesized peptide derived from ADAM32 . at AA range: 460-540
<b>Specificity</b>	ADAM32 Polyclonal Antibody detects endogenous levels of ADAM32 protein.
<b>Formulation</b>	Liquid in PBS containing 50% glycerol, 0.5% BSA and 0.02% sodium azide..
<b>Storage</b>	Store at -20°C. Avoid repeated freeze-thaw cycles.
<b>Protein Name</b>	Disintegrin and metalloproteinase domain-containing protein 32
<b>Gene Name</b>	ADAM32
<b>Cellular localization</b>	Membrane ; Single-pass type I membrane protein .
<b>Purification</b>	The antibody was affinity-purified from rabbit antiserum by affinity-chromatography using epitope-specific immunogen.
<b>Clonality</b>	Polyclonal

<b>Concentration</b>	1 mg/ml
<b>Observed band</b>	87kD
<b>Human Gene ID</b>	203102
<b>Human Swiss-Prot Number</b>	Q8TC27
<b>Alternative Names</b>	ADAM32; Disintegrin and metalloproteinase domain-containing protein 32; ADAM 32

### Background

ADAM metalloproteinase domain 32(ADAM32) Homo sapiens This gene encodes a member of the disintegrin family of membrane-anchored proteins that play a role in diverse biological processes such as brain development, fertilization, tumor development and inflammation. This gene is predominantly expressed in the testis. The encoded protein undergoes proteolytic processing to generate a mature polypeptide comprised of an metalloprotease, disintegrin and epidermal growth factor-like domains. This gene is located in a cluster of other disintegrin and metalloproteinase family genes on chromosome 8. Alternative splicing results in multiple transcript variants encoding different isoforms. [provided by RefSeq, Sep 2015],



**Western Blot analysis of various cells using ADAM32 Polyclonal Antibody diluted at 1:1000**