

Actinin- α 3 rabbit pAb**Cat#: orb764470 (Manual)**

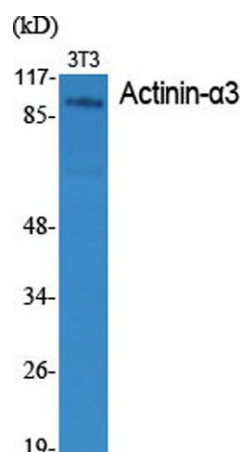
For research use only. Not intended for diagnostic use.

Product Name	Actinin- α 3 rabbit pAb
Host species	Rabbit
Applications	WB;IF;ELISA
Species Cross-Reactivity	Human;Mouse;Rat
Recommended dilutions	Western Blot: 1/500 - 1/2000. Immunofluorescence: 1/200 - 1/1000. ELISA: 1/20000. Not yet tested in other applications.
Immunogen	The antiserum was produced against synthesized peptide derived from human ACTN3. AA range:1-50
Specificity	Actinin- α 3 Polyclonal Antibody detects endogenous levels of Actinin- α 3 protein.
Formulation	Liquid in PBS containing 50% glycerol, 0.5% BSA and 0.02% sodium azide..
Storage	Store at -20°C. Avoid repeated freeze-thaw cycles.
Protein Name	Alpha-actinin-3
Gene Name	ACTN3
Cellular localization	intracellular,cytosol,actin filament,brush border,focal adhesion,Z disc,pseudopodium,extracellular exosome,
Purification	The antibody was affinity-purified from rabbit antiserum by affinity-chromatography using epitope-specific immunogen.
Clonality	Polyclonal

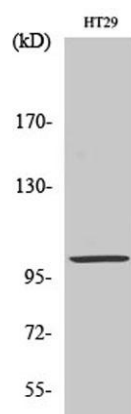
Concentration	1 mg/ml
Observed band	103kD
Human Gene ID	89
Human Swiss-Prot Number	Q08043
Alternative Names	ACTN3; Alpha-actinin-3; Alpha-actinin skeletal muscle isoform 3; F-actin cross-linking protein

Background

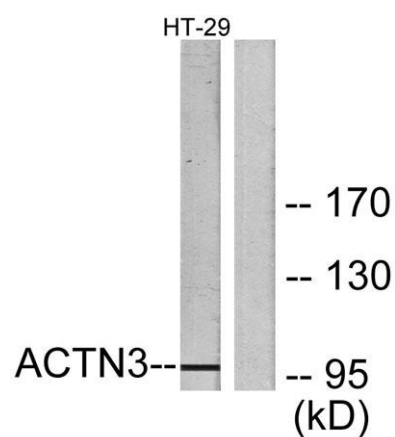
This gene encodes a member of the alpha-actin binding protein gene family. The encoded protein is primarily expressed in skeletal muscle and functions as a structural component of sarcomeric Z line. This protein is involved in crosslinking actin containing thin filaments. An allelic polymorphism in this gene results in both coding and non-coding variants; the reference genome represents the coding allele. The non-functional allele of this gene is associated with elite athlete status. [provided by RefSeq, Feb 2014],



Western Blot analysis of various cells using Actinin- α 3 Polyclonal Antibody



Western Blot analysis of HT29 cells using Actinin- α 3 Polyclonal Antibody



Western blot analysis of lysates from HT-29 cells, using ACTN3 Antibody. The lane on the right is blocked with the synthesized peptide.