

ABHD2 rabbit pAb**Cat#: orb764447 (Manual)**

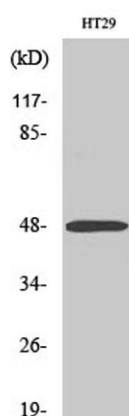
For research use only. Not intended for diagnostic use.

Product Name	ABHD2 rabbit pAb
Host species	Rabbit
Applications	WB;IF;ELISA
Species Cross-Reactivity	Human;Mouse
Recommended dilutions	Western Blot: 1/500 - 1/2000. Immunofluorescence: 1/200 - 1/1000. ELISA: 1/40000. Not yet tested in other applications.
Immunogen	The antiserum was produced against synthesized peptide derived from human ABHD2. AA range:251-300
Specificity	ABHD2 Polyclonal Antibody detects endogenous levels of ABHD2 protein.
Formulation	Liquid in PBS containing 50% glycerol, 0.5% BSA and 0.02% sodium azide..
Storage	Store at -20°C. Avoid repeated freeze-thaw cycles.
Protein Name	Abhydrolase domain-containing protein 2
Gene Name	ABHD2
Cellular localization	Cell projection, cilium, flagellum membrane ; Single-pass type II membrane protein . Cell membrane ; Single-pass type II membrane protein .
Purification	The antibody was affinity-purified from rabbit antiserum by affinity-chromatography using epitope-specific immunogen.
Clonality	Polyclonal

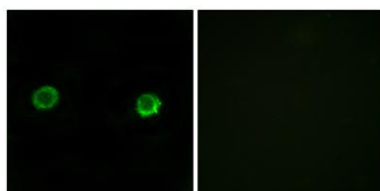
Concentration	1 mg/ml
Observed band	48kD
Human Gene ID	11057
Human Swiss-Prot Number	P08910
Alternative Names	ABHD2; LABH2; Abhydrolase domain-containing protein 2; Lung alpha/beta hydrolase 2; Protein PHPS1-2

Background

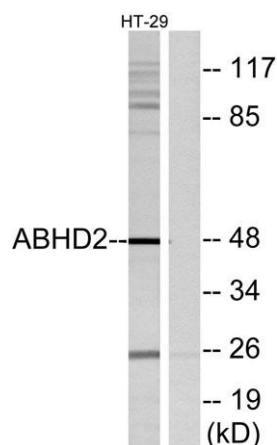
This gene encodes a protein containing an alpha/beta hydrolase fold, which is a catalytic domain found in a very wide range of enzymes. The function of this protein has not been determined. Alternative splicing of this gene results in two transcript variants encoding the same protein. [provided by RefSeq, Jul 2008],



Western Blot analysis of various cells using ABHD2 Polyclonal Antibody



Immunofluorescence analysis of MCF-7 cells, using ABHD2 Antibody. The picture on the right is blocked with the synthesized peptide.



Western blot analysis of lysates from HT29 cells, using ABHD2 Antibody. The lane on the right is blocked with the synthesized peptide.