

**ABCB7 rabbit pAb****Cat#: orb764439 (Manual)**

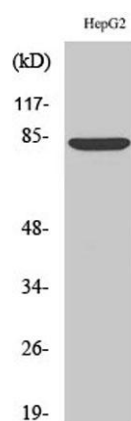
For research use only. Not intended for diagnostic use.

<b>Product Name</b>	ABCB7 rabbit pAb
<b>Host species</b>	Rabbit
<b>Applications</b>	WB;IHC;IF;ELISA
<b>Species Cross-Reactivity</b>	Human;Rat;Mouse;
<b>Recommended dilutions</b>	Western Blot: 1/500 - 1/2000. Immunohistochemistry: 1/100 - 1/300. ELISA: 1/40000. Not yet tested in other applications.
<b>Immunogen</b>	The antiserum was produced against synthesized peptide derived from human ABCB7. AA range:691-740
<b>Specificity</b>	ABCB7 Polyclonal Antibody detects endogenous levels of ABCB7 protein.
<b>Formulation</b>	Liquid in PBS containing 50% glycerol, 0.5% BSA and 0.02% sodium azide..
<b>Storage</b>	Store at -20°C. Avoid repeated freeze-thaw cycles.
<b>Protein Name</b>	ATP-binding cassette sub-family B member 7 mitochondrial
<b>Gene Name</b>	ABCB7
<b>Cellular localization</b>	Mitochondrion inner membrane ; Multi-pass membrane protein .
<b>Purification</b>	The antibody was affinity-purified from rabbit antiserum by affinity-chromatography using epitope-specific immunogen.
<b>Clonality</b>	Polyclonal

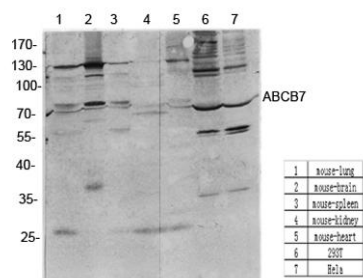
<b>Concentration</b>	1 mg/ml
<b>Observed band</b>	Human:83kD,Mouse/Rat 100kD
<b>Human Gene ID</b>	22
<b>Human Swiss-Prot Number</b>	O75027
<b>Alternative Names</b>	ABCB7; ABC7; ATP-binding cassette sub-family B member 7; mitochondrial; ATP-binding cassette transporter 7; ABC transporter 7 protein

### Background

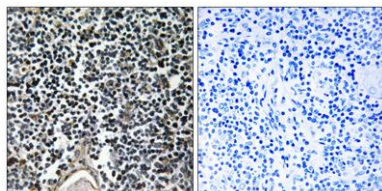
The membrane-associated protein encoded by this gene is a member of the superfamily of ATP-binding cassette (ABC) transporters. ABC proteins transport various molecules across extra- and intra-cellular membranes. ABC genes are divided into seven distinct subfamilies (ABC1, MDR/TAP, MRP, ALD, OABP, GCN20, White). This protein is a member of the MDR/TAP subfamily. Members of the MDR/TAP subfamily are involved in multidrug resistance as well as antigen presentation. This gene encodes a half-transporter involved in the transport of heme from the mitochondria to the cytosol. With iron/sulfur cluster precursors as its substrates, this protein may play a role in metal homeostasis. Mutations in this gene have been associated with mitochondrial iron accumulation and isodicentric (X)(q13) and sideroblastic anemia. Alternatively spliced transcript variants encoding multiple isoforms hav



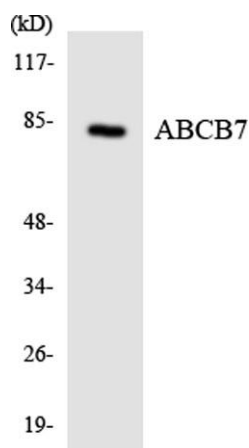
**Western Blot analysis of various cells using ABCB7 Polyclonal Antibody diluted at 1:1000**



**Western Blot analysis of various cells using antibody diluted at 1:1000. Secondary antibody(catalog#:RS0002) was diluted at 1:20000**



**Immunohistochemistry analysis of paraffin-embedded human thymus gland, using ABCB7 Antibody. The picture on the right is blocked with the synthesized peptide.**



**Western blot analysis of the lysates from HUVEC cells using ABCB7 antibody.**