

**ABCA8 rabbit pAb****Cat#: orb764437 (Manual)**

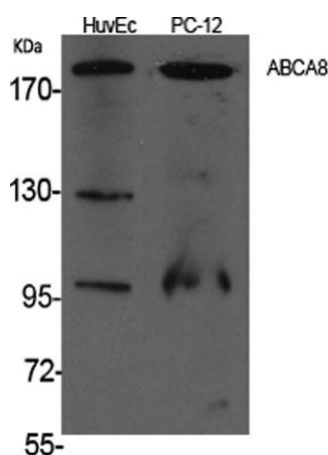
For research use only. Not intended for diagnostic use.

<b>Product Name</b>	ABCA8 rabbit pAb
<b>Host species</b>	Rabbit
<b>Applications</b>	WB;ELISA
<b>Species Cross-Reactivity</b>	Human;Mouse
<b>Recommended dilutions</b>	Western Blot: 1/500 - 1/2000. ELISA: 1/40000. Not yet tested in other applications.
<b>Immunogen</b>	The antiserum was produced against synthesized peptide derived from human ABCA8. AA range:1151-1200
<b>Specificity</b>	ABCA8 Polyclonal Antibody detects endogenous levels of ABCA8 protein.
<b>Formulation</b>	Liquid in PBS containing 50% glycerol, 0.5% BSA and 0.02% sodium azide..
<b>Storage</b>	Store at -20°C. Avoid repeated freeze-thaw cycles.
<b>Protein Name</b>	ATP-binding cassette sub-family A member 8
<b>Gene Name</b>	ABCA8
<b>Cellular localization</b>	Cell membrane ; Multi-pass membrane protein . Basolateral cell membrane . Predominantly expressed on the sinusoidal plasma membrane. .
<b>Purification</b>	The antibody was affinity-purified from rabbit antiserum by affinity-chromatography using epitope-specific immunogen.
<b>Clonality</b>	Polyclonal

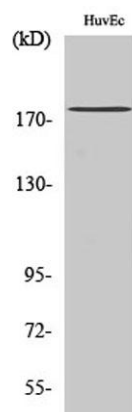
<b>Concentration</b>	1 mg/ml
<b>Observed band</b>	179kD
<b>Human Gene ID</b>	10351
<b>Human Swiss-Prot Number</b>	O94911
<b>Alternative Names</b>	ABCA8; KIAA0822; ATP-binding cassette sub-family A member 8

### Background

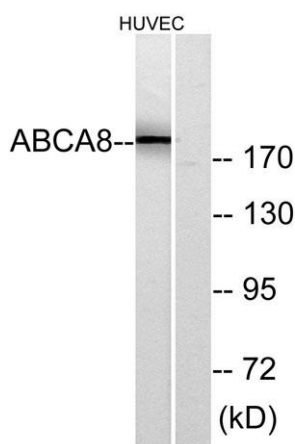
The membrane-associated protein encoded by this gene is a member of the superfamily of ATP-binding cassette (ABC) transporters. ABC proteins transport various molecules across extra- and intracellular membranes. ABC genes are divided into seven distinct subfamilies (ABC1, MDR/TAP, MRP, ALD, OABP, GCN20, White). This protein is a member of the ABC1 subfamily. Members of the ABC1 subfamily comprise the only major ABC subfamily found exclusively in multicellular eukaryotes. The encoded protein may regulate lipid metabolism and be involved in the formation and maintenance of myelin. Alternative splicing results in multiple transcript variants. [provided by RefSeq, Jan 2014],



**Western Blot analysis of various cells using ABCA8 Polyclonal Antibody**



**Western Blot analysis of HuvEc cells using ABCA8 Polyclonal Antibody**



**Western blot analysis of lysates from HUVEC cells, using ABCA8 Antibody. The lane on the right is blocked with the synthesized peptide.**