

AARSD1 rabbit pAb**Cat#: orb764433 (Manual)**

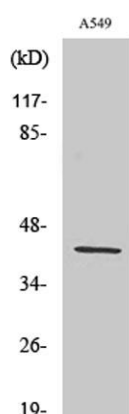
For research use only. Not intended for diagnostic use.

Product Name	AARSD1 rabbit pAb
Host species	Rabbit
Applications	WB;ELISA
Species Cross-Reactivity	Human;Mouse;Rat
Recommended dilutions	Western Blot: 1/500 - 1/2000. ELISA: 1/40000. Not yet tested in other applications.
Immunogen	The antiserum was produced against synthesized peptide derived from human AARSD1. AA range:141-190
Specificity	AARSD1 Polyclonal Antibody detects endogenous levels of AARSD1 protein.
Formulation	Liquid in PBS containing 50% glycerol, 0.5% BSA and 0.02% sodium azide..
Storage	Store at -20°C. Avoid repeated freeze-thaw cycles.
Protein Name	Alanyl-tRNA editing protein Aarsd1
Gene Name	AARSD1
Cellular localization	Cytoplasm .
Purification	The antibody was affinity-purified from rabbit antiserum by affinity-chromatography using epitope-specific immunogen.
Clonality	Polyclonal

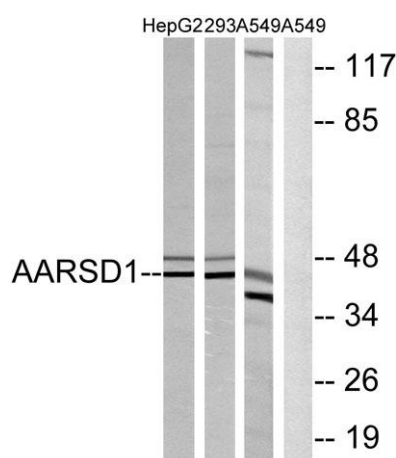
Concentration	1 mg/ml
Observed band	45kD
Human Gene ID	80755
Human Swiss-Prot Number	Q9BTE6
Alternative Names	AARSD1; Alanyl-tRNA editing protein Aarsd1; Alanyl-tRNA synthetase domain-containing protein 1

Background

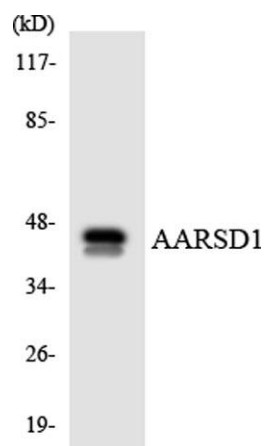
caution:The sequence shown here is derived from an Ensembl automatic analysis pipeline and should be considered as preliminary data.,similarity:Belongs to the class-II aminoacyl-tRNA synthetase family. AARSD1 subfamily.,



Western Blot analysis of various cells using AARSD1 Polyclonal Antibody



Western blot analysis of lysates from A549, 293, and HepG2 cells, using AARSD1 Antibody. The lane on the right is blocked with the synthesized peptide.



Western blot analysis of the lysates from HUVEC cells using AARSD1 antibody.