

AAK1 rabbit pAb**Cat#: orb764432 (Manual)**

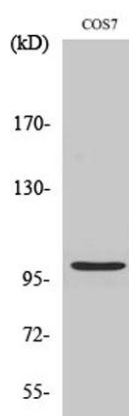
For research use only. Not intended for diagnostic use.

Product Name	AAK1 rabbit pAb
Host species	Rabbit
Applications	WB;IHC;IF;ELISA
Species Cross-Reactivity	Human;Mouse;Rat;Monkey
Recommended dilutions	Western Blot: 1/500 - 1/2000. Immunohistochemistry: 1/100 - 1/300. Immunofluorescence: 1/200 - 1/1000. ELISA: 1/20000. Not yet tested in other applications.
Immunogen	The antiserum was produced against synthesized peptide derived from human AAK1. AA range:271-320
Specificity	AAK1 Polyclonal Antibody detects endogenous levels of AAK1 protein.
Formulation	Liquid in PBS containing 50% glycerol, 0.5% BSA and 0.02% sodium azide..
Storage	Store at -20°C. Avoid repeated freeze-thaw cycles.
Protein Name	AP2-associated protein kinase 1
Gene Name	AAK1
Cellular localization	Cell membrane ; Peripheral membrane protein . Membrane, clathrin-coated pit . Cell junction, synapse, presynapse . Active when found in clathrin-coated pits at the plasma membrane. In neuronal cells, enriched at presynaptic terminals. In non-neuronal cells, enriched at leading edge of migrating cells. .
Purification	The antibody was affinity-purified from rabbit antiserum by affinity-chromatography using epitope-specific immunogen.

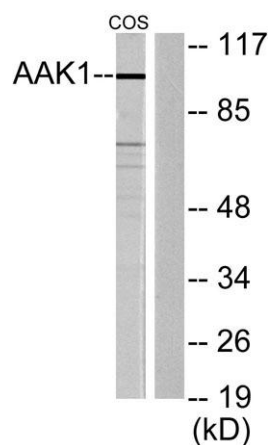
Clonality	Polyclonal
Concentration	1 mg/ml
Observed band	94kD
Human Gene ID	22848
Human Swiss-Prot Number	Q2M2I8
Alternative Names	AAK1; KIAA1048; AP2-associated protein kinase 1; Adaptor-associated kinase 1

Background

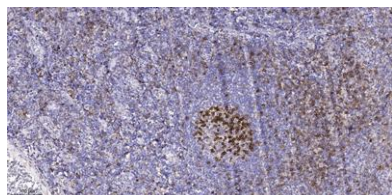
Adaptor-related protein complex 2 (AP-2 complexes) functions during receptor-mediated endocytosis to trigger clathrin assembly, interact with membrane-bound receptors, and recruit endocytic accessory factors. This gene encodes a member of the SNF1 subfamily of Ser/Thr protein kinases. The protein interacts with and phosphorylates a subunit of the AP-2 complex, which promotes binding of AP-2 to sorting signals found in membrane-bound receptors and subsequent receptor endocytosis. Its kinase activity is stimulated by clathrin. Alternatively spliced transcript variants have been described, but their biological validity has not been determined. [provided by RefSeq, Jul 2008],



Western Blot analysis of various cells using AAK1 Polyclonal Antibody



Western blot analysis of lysates from COS7 cells, using AAK1 Antibody. The lane on the right is blocked with the synthesized peptide.



Immunohistochemical analysis of paraffin-embedded human tonsil. 1, Antibody was diluted at 1:200(4° overnight). 2, Tris-EDTA,pH9.0 was used for antigen retrieval. 3,Secondary antibody was diluted at 1:200(room temperature, 45min).