

A Cyclase V/VI rabbit pAb**Cat#: orb764430 (Manual)**

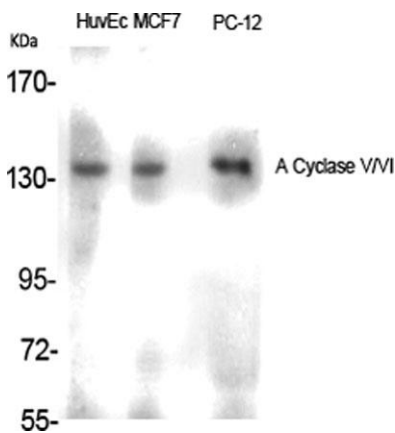
For research use only. Not intended for diagnostic use.

Product Name	A Cyclase V/VI rabbit pAb
Host species	Rabbit
Applications	WB;IHC;IF;ELISA
Species Cross-Reactivity	Human;Mouse;Rat
Recommended dilutions	Western Blot: 1/500 - 1/2000. Immunohistochemistry: 1/100 - 1/300. Immunofluorescence: 1/200 - 1/1000. ELISA: 1/10000. Not yet tested in other applications.
Immunogen	The antiserum was produced against synthesized peptide derived from human ADCY5/6. AA range:931-980
Specificity	A Cyclase V/VI Polyclonal Antibody detects endogenous levels of A Cyclase V/VI protein.
Formulation	Liquid in PBS containing 50% glycerol, 0.5% BSA and 0.02% sodium azide..
Storage	Store at -20°C. Avoid repeated freeze-thaw cycles.
Protein Name	Adenylate cyclase type 5/6
Gene Name	ADCY5/ADCY6
Cellular localization	Cell membrane ; Multi-pass membrane protein. Cell projection, cilium .
Purification	The antibody was affinity-purified from rabbit antiserum by affinity-chromatography using epitope-specific immunogen.
Clonality	Polyclonal

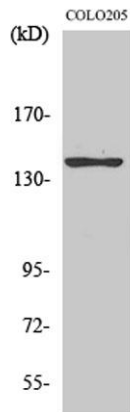
Concentration	1 mg/ml
Observed band	138kD
Human Gene ID	111/112
Human Swiss-Prot Number	O95622/O43306
Alternative Names	ADCY5; Adenylate cyclase type 5; ATP pyrophosphate-lyase 5; Adenylate cyclase type V; Adenylyl cyclase 5; ADCY6; KIAA0422; Adenylate cyclase type 6; ATP pyrophosphate-lyase 6; Adenylate cyclase type VI; Adenylyl cyclase 6; Ca(2+)-inhibitabl

Background

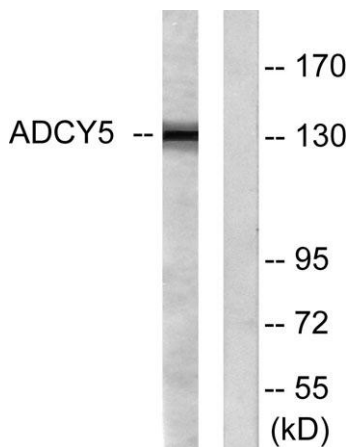
This gene encodes a member of the membrane-bound adenylyl cyclase enzymes. Adenylyl cyclases mediate G protein-coupled receptor signaling through the synthesis of the second messenger cAMP. Activity of the encoded protein is stimulated by the Gs alpha subunit of G protein-coupled receptors and is inhibited by protein kinase A, calcium and Gi alpha subunits. Single nucleotide polymorphisms in this gene may be associated with low birth weight and type 2 diabetes. Alternatively spliced transcript variants that encode different isoforms have been observed for this gene. [provided by RefSeq, Dec 2010],



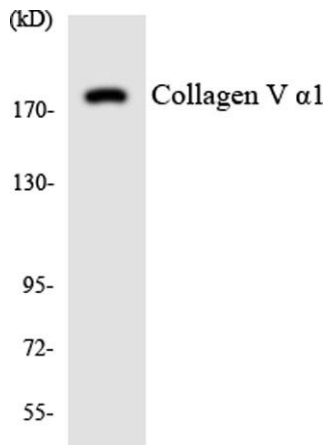
Western Blot analysis of various cells using A Cyclase V/VI Polyclonal Antibody



Western Blot analysis of COLO205 cells using A Cyclase V/VI Polyclonal Antibody



Western blot analysis of lysates from COLO205 cells, using ADCY5/6 Antibody. The lane on the right is blocked with the synthesized peptide.



Western blot analysis of the lysates from HUVEC cells using Collagen V α 1 antibody.