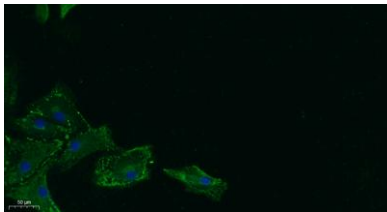


17 β -HSD11 rabbit pAb**Cat#: orb764421 (Manual)**

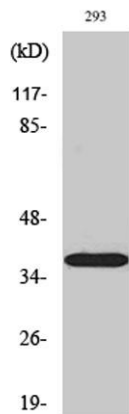
For research use only. Not intended for diagnostic use.

| | |
|---------------------------------|---|
| Product Name | 17 β -HSD11 rabbit pAb |
| Host species | Rabbit |
| Applications | WB;IF;ELISA |
| Species Cross-Reactivity | Human;Rat;Mouse; |
| Recommended dilutions | Western Blot: 1/500 - 1/2000. ELISA: 1/5000. IF 1:100-300 Not yet tested in other applications. |
| Immunogen | The antiserum was produced against synthesized peptide derived from human DHRS8. AA range:71-120 |
| Specificity | 17 β -HSD11 Polyclonal Antibody detects endogenous levels of 17 β -HSD11 protein. |
| Formulation | Liquid in PBS containing 50% glycerol, 0.5% BSA and 0.02% sodium azide.. |
| Storage | Store at -20°C. Avoid repeated freeze-thaw cycles. |
| Protein Name | Estradiol 17-beta-dehydrogenase 11 |
| Gene Name | HSD17B11 |
| Cellular localization | Endoplasmic reticulum . Lipid droplet . Redistributed from the endoplasmic reticulum to lipids droplets in the cell upon induction of lipids droplet formation. . |
| Purification | The antibody was affinity-purified from rabbit antiserum by affinity-chromatography using epitope-specific immunogen. |

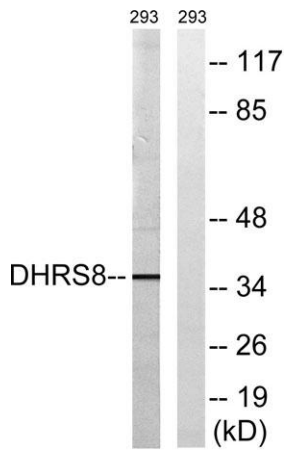
| | |
|--------------------------------|--|
| Clonality | Polyclonal |
| Concentration | 1 mg/ml |
| Observed band | 36kD |
| Human Gene ID | 51170 |
| Human Swiss-Prot Number | Q8NBQ5 |
| Alternative Names | HSD17B11; DHRS8; PAN1B; PSEC0029; Estradiol 17-beta-dehydrogenase 11; 17-beta-hydroxysteroid dehydrogenase 11; 17-beta-HSD 11; 17bHSD11; 17betaHSD11; 17-beta-hydroxysteroid dehydrogenase XI; 17-beta-HSD XI; 17betaHSDXI; Cutaneous T-cell lym |
| Background | Short-chain alcohol dehydrogenases, such as HSD17B11, metabolize secondary alcohols and ketones (Brereton et al., 2001 [PubMed 11165019]).[supplied by OMIM, Jun 2009], |



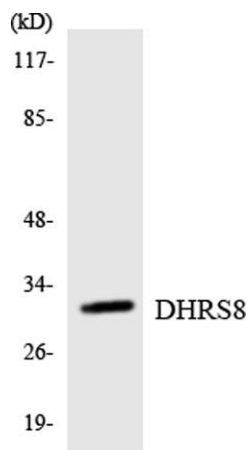
Immunofluorescence analysis of A549. 1,primary Antibody was diluted at 1:200(4°C overnight). 2, Goat Anti Rabbit IgG (H&L) - Alexa Fluor 488 Secondary antibody was diluted at 1:1000(room temperature, 50min).3, Picture B: DAPI(blue) 10min.



Western Blot analysis of various cells using 17β-HSD11 Polyclonal Antibody



Western blot analysis of lysates from 293 cells, using DHR88 Antibody. The lane on the right is blocked with the synthesized peptide.



Western blot analysis of the lysates from RAW264.7 cells using DHR88 antibody.