

**PDGFR- $\beta$  (phospho Tyr1021) rabbit pAb****Cat#: orb764401 (Manual)**

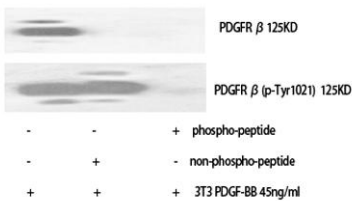
For research use only. Not intended for diagnostic use.

<b>Product Name</b>	PDGFR- $\beta$ (phospho Tyr1021) rabbit pAb
<b>Host species</b>	Rabbit
<b>Applications</b>	WB;IHC;IF;ELISA
<b>Species Cross-Reactivity</b>	Human;Mouse;Rat
<b>Recommended dilutions</b>	Immunohistochemistry: 1/100 - 1/300. ELISA: 1/5000. Not yet tested in other applications.
<b>Immunogen</b>	The antiserum was produced against synthesized peptide derived from human PDGFR beta around the phosphorylation site of Tyr1021. AA range:991-1040
<b>Specificity</b>	Phospho-PDGFR- $\beta$ (Y1021) Polyclonal Antibody detects endogenous levels of PDGFR- $\beta$ protein only when phosphorylated at Y1021.
<b>Formulation</b>	Liquid in PBS containing 50% glycerol, 0.5% BSA and 0.02% sodium azide..
<b>Storage</b>	Store at -20°C. Avoid repeated freeze-thaw cycles.
<b>Protein Name</b>	Platelet-derived growth factor receptor beta
<b>Gene Name</b>	PDGFRB
<b>Cellular localization</b>	Cell membrane; Single-pass type I membrane protein. Cytoplasmic vesicle. Lysosome lumen. After ligand binding, the autophosphorylated receptor is ubiquitinated and internalized, leading to its degradation.
<b>Purification</b>	The antibody was affinity-purified from rabbit antiserum by affinity-chromatography using epitope-specific immunogen.

<b>Clonality</b>	Polyclonal
<b>Concentration</b>	1 mg/ml
<b>Observed band</b>	135-180kD
<b>Human Gene ID</b>	5159
<b>Human Swiss-Prot Number</b>	P09619
<b>Alternative Names</b>	PDGFRB; PDGFR; PDGFR1; Platelet-derived growth factor receptor beta; PDGF-R-beta; PDGFR-beta; Beta platelet-derived growth factor receptor; Beta-type platelet-derived growth factor receptor; CD140 antigen-like family member B; Platelet-deri

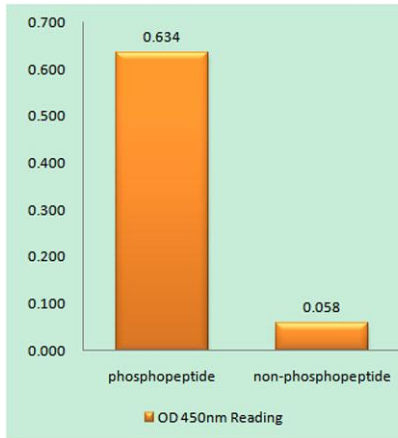
**Background**

This gene encodes a cell surface tyrosine kinase receptor for members of the platelet-derived growth factor family. These growth factors are mitogens for cells of mesenchymal origin. The identity of the growth factor bound to a receptor monomer determines whether the functional receptor is a homodimer or a heterodimer, composed of both platelet-derived growth factor receptor alpha and beta polypeptides. This gene is flanked on chromosome 5 by the genes for granulocyte-macrophage colony-stimulating factor and macrophage-colony stimulating factor receptor; all three genes may be implicated in the 5-q syndrome. A translocation between chromosomes 5 and 12, that fuses this gene to that of the translocation, ETV6, leukemia gene, results in chronic myeloproliferative disorder with eosinophilia. [provided by RefSeq, Jul 2008],

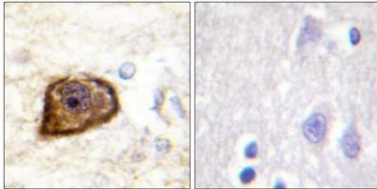


**Western Blot analysis of various cells using Phospho-PDGFR-β (Y1021) Polyclonal Antibody**

Explore. Bioreagents.



**Enzyme-Linked Immunosorbent Assay (Phospho-ELISA) for Immunogen Phosphopeptide (Phospho-left) and Non-Phosphopeptide (Phospho-right), using PDGFR beta (Phospho-Tyr1021) Antibody**



**Immunohistochemistry analysis of paraffin-embedded human brain, using PDGFR beta (Phospho-Tyr1021) Antibody. The picture on the right is blocked with the phospho peptide.**