

Crk-L (phospho Tyr207) rabbit pAb**Cat#: orb764392 (Manual)**

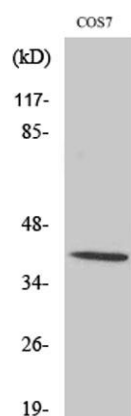
For research use only. Not intended for diagnostic use.

Product Name	Crk-L (phospho Tyr207) rabbit pAb
Host species	Rabbit
Applications	WB;IHC;IF;ELISA
Species Cross-Reactivity	Human;Mouse;Rat;Monkey
Recommended dilutions	Western Blot: 1/500 - 1/2000. Immunohistochemistry: 1/100 - 1/300. Immunofluorescence: 1/200 - 1/1000. ELISA: 1/5000. Not yet tested in other applications.
Immunogen	The antiserum was produced against synthesized peptide derived from human CrkL around the phosphorylation site of Tyr207. AA range:173-222
Specificity	Phospho-Crk-L (Y207) Polyclonal Antibody detects endogenous levels of Crk-L protein only when phosphorylated at Y207.
Formulation	Liquid in PBS containing 50% glycerol, 0.5% BSA and 0.02% sodium azide..
Storage	Store at -20°C. Avoid repeated freeze-thaw cycles.
Protein Name	Crk-like protein
Gene Name	CRKL
Cellular localization	endosome,cytosol,cell-cell adherens junction,extracellular exosome,
Purification	The antibody was affinity-purified from rabbit antiserum by affinity-chromatography using epitope-specific immunogen.
Clonality	Polyclonal

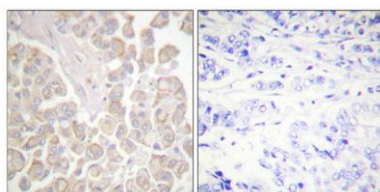
Concentration	1 mg/ml
Observed band	39kD
Human Gene ID	1399
Human Swiss-Prot Number	P46109
Alternative Names	CRKL; Crk-like protein

Background

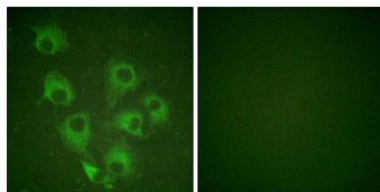
This gene encodes a protein kinase containing SH2 and SH3 (src homology) domains which has been shown to activate the RAS and JUN kinase signaling pathways and transform fibroblasts in a RAS-dependent fashion. It is a substrate of the BCR-ABL tyrosine kinase, plays a role in fibroblast transformation by BCR-ABL, and may be oncogenic.[provided by RefSeq, Jan 2009],



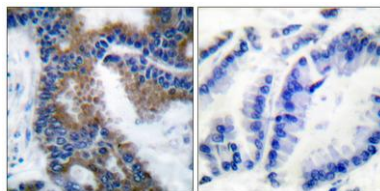
Western Blot analysis of various cells using Phospho-Crk-L (Y207) Polyclonal Antibody



Immunohistochemical analysis of paraffin-embedded Human breast cancer. Antibody was diluted at 1:100(4° overnight). High-pressure and temperature Tris-EDTA,pH8.0 was used for antigen retrieval. Negative contrl (right) obtained from antibody was pre-absorbed by immunogen peptide.



Immunofluorescence analysis of HUVEC cells, using CrkL (Phospho-Tyr207) Antibody. The picture on the right is blocked with the phospho peptide.



Immunohistochemistry analysis of paraffin-embedded human lung carcinoma, using CrkL (Phospho-Tyr207) Antibody. The picture on the right is blocked with the phospho peptide.