

Erbin (phospho Tyr1104) rabbit pAb**Cat#: orb764182 (Manual)**

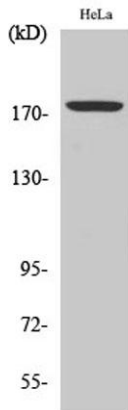
For research use only. Not intended for diagnostic use.

Product Name	Erbin (phospho Tyr1104) rabbit pAb
Host species	Rabbit
Applications	WB;ELISA
Species Cross-Reactivity	Human;Rat;Mouse;
Recommended dilutions	Western Blot: 1/500 - 1/2000. ELISA: 1/10000. Not yet tested in other applications.
Immunogen	Synthesized phospho-peptide around the phosphorylation site of human Erbin (phospho Tyr1104)
Specificity	Phospho-Erbin (Y1104) Polyclonal Antibody detects endogenous levels of Erbin protein only when phosphorylated at Y1104.
Formulation	Liquid in PBS containing 50% glycerol, 0.5% BSA and 0.02% sodium azide..
Storage	Store at -20°C. Avoid repeated freeze-thaw cycles.
Protein Name	Protein LAP2
Gene Name	ERBB2IP
Cellular localization	Cell junction, hemidesmosome . Nucleus membrane . Basolateral cell membrane . Found in hemidesmosomes, which are cell-substrate adhesion complexes in stratified epithelia. In transfected cells, either diffusely distributed over the cytoplasm or concentrated at the basolateral membrane. Colocalizes with the adrenergic receptors, ADREN1A and ADREN1B, at the nuclear membrane of cardiac myocytes (By similarity). .

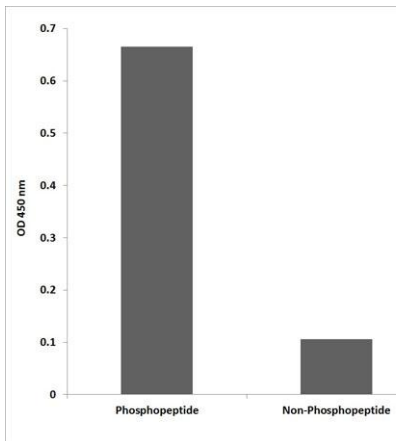
Purification	The antibody was affinity-purified from rabbit antiserum by affinity-chromatography using epitope-specific immunogen.
Clonality	Polyclonal
Concentration	1 mg/ml
Observed band	172kD
Human Gene ID	55914
Human Swiss-Prot Number	Q96RT1
Alternative Names	ERBB2IP; ERBIN; KIAA1225; LAP2; Protein LAP2; Densin-180-like protein; Erbb2-interacting protein; Erbin

Background

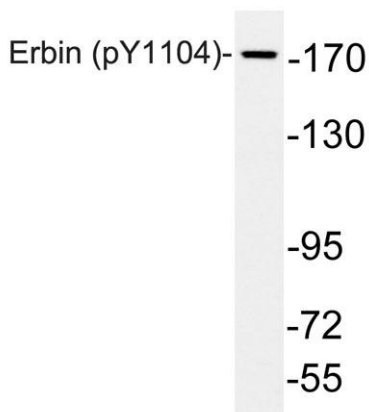
This gene is a member of the leucine-rich repeat and PDZ domain (LAP) family. The encoded protein contains 17 leucine-rich repeats and one PDZ domain. It binds to the unphosphorylated form of the ERBB2 protein and regulates ERBB2 function and localization. It has also been shown to affect the Ras signaling pathway by disrupting Ras-Raf interaction. Alternatively spliced transcript variants encoding multiple isoforms have been observed for this gene. [provided by RefSeq, Nov 2011],



Western Blot analysis of various cells using Phospho-Erbin (Y1104) Polyclonal Antibody



Enzyme-Linked Immunosorbent Assay (Phospho-ELISA) for Immunogen Phosphopeptide (Phospho-left) and Non-Phosphopeptide (Phospho-right), using Erbin (Phospho-Tyr1104) Antibody



Western blot analysis of lysates from HeLa cells, using phospho-Erbin (Phospho-Tyr1104) antibody.