

**p73 (Acetyl Lys321) rabbit pAb****Cat#: orb763987 (Manual)**

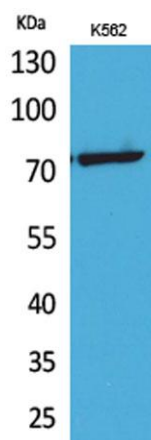
For research use only. Not intended for diagnostic use.

<b>Product Name</b>	p73 (Acetyl Lys321) rabbit pAb
<b>Host species</b>	Rabbit
<b>Applications</b>	WB;IHC;IF;ELISA
<b>Species Cross-Reactivity</b>	Human;Rat;Mouse;
<b>Recommended dilutions</b>	Western Blot: 1/500 - 1/2000. IHC-p: 1:100-300 ELISA: 1/20000. Not yet tested in other applications.
<b>Immunogen</b>	The antiserum was produced against synthesized Acetyl-peptide derived from human p73 around the Acetylation site of Lys321. AA range:281-330
<b>Specificity</b>	Acetyl-p73 (K321) Polyclonal Antibody detects endogenous levels of p73 protein only when acetylated at K321.
<b>Formulation</b>	Liquid in PBS containing 50% glycerol, 0.5% BSA and 0.02% sodium azide..
<b>Storage</b>	Store at -20°C. Avoid repeated freeze-thaw cycles.
<b>Protein Name</b>	Tumor protein p73
<b>Gene Name</b>	TP73
<b>Cellular localization</b>	Nucleus . Cytoplasm. Accumulates in the nucleus in response to DNA damage.
<b>Purification</b>	The antibody was affinity-purified from rabbit antiserum by affinity-chromatography using epitope-specific immunogen.
<b>Clonality</b>	Polyclonal

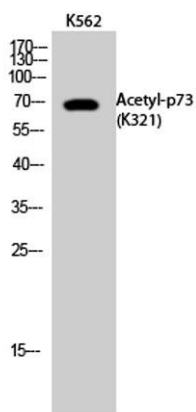
<b>Concentration</b>	1 mg/ml
<b>Observed band</b>	70kD
<b>Human Gene ID</b>	7161
<b>Human Swiss-Prot Number</b>	O15350
<b>Alternative Names</b>	TP73; P73; Tumor protein p73; p53-like transcription factor; p53-related protein

### Background

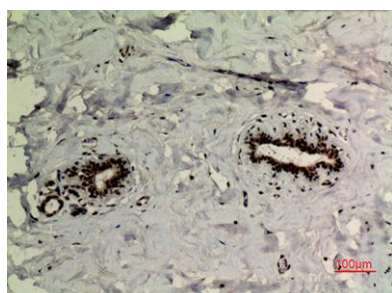
tumor protein p73(TP73) Homo sapiens This gene encodes a member of the p53 family of transcription factors involved in cellular responses to stress and development. It maps to a region on chromosome 1p36 that is frequently deleted in neuroblastoma and other tumors, and thought to contain multiple tumor suppressor genes. The demonstration that this gene is monoallelically expressed (likely from the maternal allele), supports the notion that it is a candidate gene for neuroblastoma. Many transcript variants resulting from alternative splicing and/or use of alternate promoters have been found for this gene, but the biological validity and the full-length nature of some variants have not been determined. [provided by RefSeq, Feb 2011],



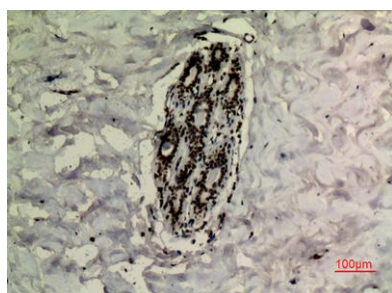
**Western Blot analysis of K562 cells using Acetyl-p73 (K321) Polyclonal Antibody. Secondary antibody(catalog#:RS0002) was diluted at 1:20000**



**Western Blot analysis of K562 cells using Acetyl-p73 (K321) Polyclonal Antibody. Secondary antibody(catalog#:RS0002) was diluted at 1:20000**



**Immunohistochemical analysis of paraffin-embedded human-breast, antibody was diluted at 1:100**



**Immunohistochemical analysis of paraffin-embedded human-breast, antibody was diluted at 1:100**