

Cleaved-Integrin α 7 LC (E959) rabbit pAb**Cat#: orb763939 (Manual)**

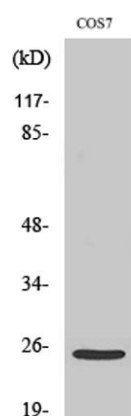
For research use only. Not intended for diagnostic use.

Product Name	Cleaved-Integrin α 7 LC (E959) rabbit pAb
Host species	Rabbit
Applications	WB;ELISA
Species Cross-Reactivity	Human;Monkey
Recommended dilutions	Western Blot: 1/500 - 1/2000. ELISA: 1/40000. Not yet tested in other applications.
Immunogen	The antiserum was produced against synthesized peptide derived from human ITGA7. AA range:940-989
Specificity	Cleaved-Integrin α 7 LC (E959) Polyclonal Antibody detects endogenous levels of fragment of activated Integrin α 7 LC protein resulting from cleavage adjacent to E959.
Formulation	Liquid in PBS containing 50% glycerol, 0.5% BSA and 0.02% sodium azide..
Storage	Store at -20°C. Avoid repeated freeze-thaw cycles.
Protein Name	Integrin alpha-7
Gene Name	ITGA7
Cellular localization	Membrane; Single-pass type I membrane protein.
Purification	The antibody was affinity-purified from rabbit antiserum by affinity-chromatography using epitope-specific immunogen.
Clonality	Polyclonal

Concentration	1 mg/ml
Observed band	25kD
Human Gene ID	3679
Human Swiss-Prot Number	Q13683
Alternative Names	ITGA7; Integrin alpha-7

Background

integrin subunit alpha 7(ITGA7) Homo sapiens The protein encoded by this gene belongs to the integrin alpha chain family. Integrins are heterodimeric integral membrane proteins composed of an alpha chain and a beta chain. They mediate a wide spectrum of cell-cell and cell-matrix interactions, and thus play a role in cell migration, morphologic development, differentiation, and metastasis. This protein functions as a receptor for the basement membrane protein laminin-1. It is mainly expressed in skeletal and cardiac muscles and may be involved in differentiation and migration processes during myogenesis. Defects in this gene are associated with congenital myopathy. Alternatively spliced transcript variants encoding different isoforms have been noted for this gene. [provided by RefSeq, Feb 2009],



Western Blot analysis of various cells using Cleaved-Integrin α7 LC (E959) Polyclonal Antibody



Western blot analysis of lysates from COS7 cells, treated with etoposide 25uM 1h, using ITGA7 (light chain, Cleaved-Glu959) Antibody. The lane on the right is blocked with the synthesized peptide.