

Cleaved-MMP-15 (Y132) rabbit pAb**Cat#: orb763920 (Manual)**

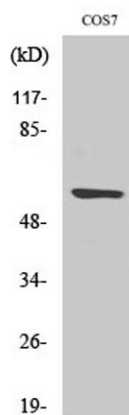
For research use only. Not intended for diagnostic use.

Product Name	Cleaved-MMP-15 (Y132) rabbit pAb
Host species	Rabbit
Applications	WB;ELISA
Species Cross-Reactivity	Human;Monkey
Recommended dilutions	Western Blot: 1/500 - 1/2000. ELISA: 1/10000. Not yet tested in other applications.
Immunogen	The antiserum was produced against synthesized peptide derived from human MMP15. AA range:113-162
Specificity	Cleaved-MMP-15 (Y132) Polyclonal Antibody detects endogenous levels of fragment of activated MMP-15 protein resulting from cleavage adjacent to Y132.
Formulation	Liquid in PBS containing 50% glycerol, 0.5% BSA and 0.02% sodium azide..
Storage	Store at -20°C. Avoid repeated freeze-thaw cycles.
Protein Name	Matrix metalloproteinase-15
Gene Name	MMP15
Cellular localization	Membrane ; Single-pass type I membrane protein ; Extracellular side .
Purification	The antibody was affinity-purified from rabbit antiserum by affinity-chromatography using epitope-specific immunogen.
Clonality	Polyclonal

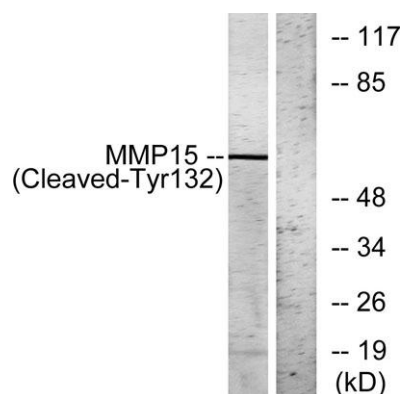
Concentration	1 mg/ml
Observed band	61kD
Human Gene ID	4324
Human Swiss-Prot Number	P51511
Alternative Names	MMP15; Matrix metalloproteinase-15; MMP-15; Membrane-type matrix metalloproteinase 2; MT-MMP 2; MTMMP2; Membrane-type-2 matrix metalloproteinase; MT2-MMP; MT2MMP; SMCP-2

Background

This gene encodes a member of the peptidase M10 family and membrane-type subfamily of matrix metalloproteinases (MMPs). Proteins in this family are involved in the breakdown of extracellular matrix in normal physiological processes, such as embryonic development, reproduction, and tissue remodeling, as well as in disease processes, such as arthritis and metastasis. Members of this subfamily contain a transmembrane domain suggesting that these proteins are expressed at the cell surface rather than secreted. The encoded preproprotein is proteolytically processed to generate the mature protease. This protein may play a role in cancer progression. [provided by RefSeq, Jan 2016],



Western Blot analysis of various cells using Cleaved-MMP-15 (Y132) Polyclonal Antibody



Western blot analysis of lysates from COS7 cells, treated with etoposide 25uM 1h, using MMP15 (Cleaved-Tyr132) Antibody. The lane on the right is blocked with the synthesized peptide.