

**Cleaved-MMP-14 (Y112) rabbit pAb****Cat#: orb763919 (Manual)**

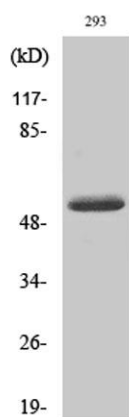
For research use only. Not intended for diagnostic use.

<b>Product Name</b>	Cleaved-MMP-14 (Y112) rabbit pAb
<b>Host species</b>	Rabbit
<b>Applications</b>	WB;ELISA
<b>Species Cross-Reactivity</b>	Human;Mouse;Rat
<b>Recommended dilutions</b>	Western Blot: 1/500 - 1/2000. ELISA: 1/20000. Not yet tested in other applications.
<b>Immunogen</b>	The antiserum was produced against synthesized peptide derived from human MMP14. AA range:93-142
<b>Specificity</b>	Cleaved-MMP-14 (Y112) Polyclonal Antibody detects endogenous levels of fragment of activated MMP-14 protein resulting from cleavage adjacent to Y112.
<b>Formulation</b>	Liquid in PBS containing 50% glycerol, 0.5% BSA and 0.02% sodium azide..
<b>Storage</b>	Store at -20°C. Avoid repeated freeze-thaw cycles.
<b>Protein Name</b>	Matrix metalloproteinase-14
<b>Gene Name</b>	MMP14
<b>Cellular localization</b>	Membrane ; Single-pass type I membrane protein . Melanosome. Cytoplasm. Identified by mass spectrometry in melanosome fractions from stage I to stage IV. Forms a complex with BST2 and localizes to the cytoplasm.
<b>Purification</b>	The antibody was affinity-purified from rabbit antiserum by affinity-chromatography using epitope-specific immunogen.

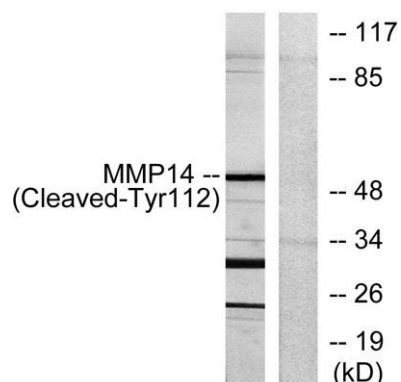
<b>Clonality</b>	Polyclonal
<b>Concentration</b>	1 mg/ml
<b>Observed band</b>	53kD
<b>Human Gene ID</b>	4323
<b>Human Swiss-Prot Number</b>	P50281
<b>Alternative Names</b>	MMP14; Matrix metalloproteinase-14; MMP-14; MMP-X1; Membrane-type matrix metalloproteinase 1; MT-MMP 1; MTMMP1; Membrane-type-1 matrix metalloproteinase; MT1-MMP; MT1MMP

### Background

Proteins of the matrix metalloproteinase (MMP) family are involved in the breakdown of extracellular matrix in normal physiological processes, such as embryonic development, reproduction, and tissue remodeling, as well as in disease processes, such as arthritis and metastasis. Most MMP's are secreted as inactive proproteins which are activated when cleaved by extracellular proteinases. However, the protein encoded by this gene is a member of the membrane-type MMP (MT-MMP) subfamily; each member of this subfamily contains a potential transmembrane domain suggesting that these proteins are expressed at the cell surface rather than secreted. This protein activates MMP2 protein, and this activity may be involved in tumor invasion. [provided by RefSeq, Jul 2008],



**Western Blot analysis of various cells using Cleaved-MMP-14 (Y112) Polyclonal Antibody**



Western blot analysis of lysates from 293 cells, treated with etoposide 25uM 1h, using MMP14 (Cleaved-Tyr112) Antibody. The lane on the right is blocked with the synthesized peptide.