

Cleaved-Cathepsin L2 (L114) rabbit pAb**Cat#: orb763907 (Manual)**

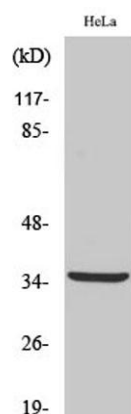
For research use only. Not intended for diagnostic use.

Product Name	Cleaved-Cathepsin L2 (L114) rabbit pAb
Host species	Rabbit
Applications	WB;ELISA
Species Cross-Reactivity	Human;Monkey
Recommended dilutions	Western Blot: 1/500 - 1/2000. ELISA: 1/20000. Not yet tested in other applications.
Immunogen	The antiserum was produced against synthesized peptide derived from human CATL2. AA range:95-144
Specificity	Cleaved-Cathepsin L2 (L114) Polyclonal Antibody detects endogenous levels of fragment of activated Cathepsin L2 protein resulting from cleavage adjacent to L114.
Formulation	Liquid in PBS containing 50% glycerol, 0.5% BSA and 0.02% sodium azide..
Storage	Store at -20°C. Avoid repeated freeze-thaw cycles.
Protein Name	Cathepsin L2
Gene Name	CTSL2
Cellular localization	Lysosome .
Purification	The antibody was affinity-purified from rabbit antiserum by affinity-chromatography using epitope-specific immunogen.
Clonality	Polyclonal

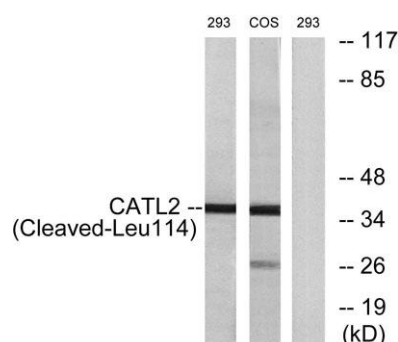
Concentration	1 mg/ml
Observed band	37kD
Human Gene ID	1515
Human Swiss-Prot Number	O60911
Alternative Names	CTSL2; CATL2; CTSU; CTSV; Cathepsin L2; Cathepsin U; Cathepsin V

Background

The protein encoded by this gene, a member of the peptidase C1 family, is a lysosomal cysteine proteinase that may play an important role in corneal physiology. This gene is expressed in colorectal and breast carcinomas but not in normal colon, mammary gland, or peritumoral tissues, suggesting a possible role for this gene in tumor processes. Alternatively spliced variants, encoding the same protein, have been identified. [provided by RefSeq, Jan 2011],



Western Blot analysis of various cells using Cleaved-Cathepsin L2 (L114) Polyclonal Antibody



Western blot analysis of lysates from 293 and COS cells, treated with etoposide 25uM 1h, using CATL2 (Cleaved-Leu114) Antibody. The lane on the right is blocked with the synthesized peptide.



Explore. Bioreagents.

www.biorbyt.com