

**Cleaved-Cathepsin L1 HC (T288) rabbit pAb****Cat#: orb763904 (Manual)**

For research use only. Not intended for diagnostic use.

<b>Product Name</b>	Cleaved-Cathepsin L1 HC (T288) rabbit pAb
<b>Host species</b>	Rabbit
<b>Applications</b>	WB;ELISA
<b>Species Cross-Reactivity</b>	Human;Rat;Mouse;
<b>Recommended dilutions</b>	Western Blot: 1/500 - 1/2000. ELISA: 1/10000. Not yet tested in other applications.
<b>Immunogen</b>	The antiserum was produced against synthesized peptide derived from human CATL1. AA range:239-288
<b>Specificity</b>	Cleaved-Cathepsin L1 HC (T288) Polyclonal Antibody detects endogenous levels of fragment of activated Cathepsin L1 HC protein resulting from cleavage adjacent to T288.
<b>Formulation</b>	Liquid in PBS containing 50% glycerol, 0.5% BSA and 0.02% sodium azide..
<b>Storage</b>	Store at -20°C. Avoid repeated freeze-thaw cycles.
<b>Protein Name</b>	Cathepsin L1
<b>Gene Name</b>	CTSL1
<b>Cellular localization</b>	Lysosome . Apical cell membrane ; Peripheral membrane protein ; Extracellular side . Cytoplasmic vesicle, secretory vesicle, chromaffin granule . Secreted, extracellular space . Secreted . Localizes to the apical membrane of thyroid epithelial cells. Rele
<b>Purification</b>	The antibody was affinity-purified from rabbit antiserum by affinity-chromatography using epitope-specific immunogen.

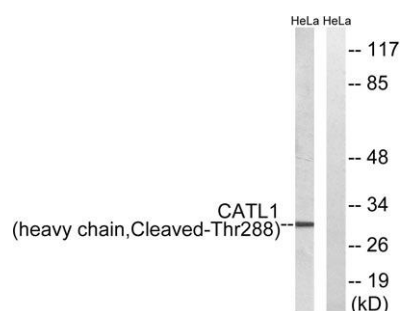
<b>Clonality</b>	Polyclonal
<b>Concentration</b>	1 mg/ml
<b>Observed band</b>	30kD
<b>Human Gene ID</b>	1514
<b>Human Swiss-Prot Number</b>	P07711
<b>Alternative Names</b>	CTSL1; CTSL; Cathepsin L1; Major excreted protein; MEP

## Background

The protein encoded by this gene is a lysosomal cysteine proteinase that plays a major role in intracellular protein catabolism. Its substrates include collagen and elastin, as well as alpha-1 protease inhibitor, a major controlling element of neutrophil elastase activity. The encoded protein has been implicated in several pathologic processes, including myofibril necrosis in myopathies and in myocardial ischemia, and in the renal tubular response to proteinuria. This protein, which is a member of the peptidase C1 family, is a dimer composed of disulfide-linked heavy and light chains, both produced from a single protein precursor. Multiple alternatively spliced transcript variants have been found for this gene. [provided by RefSeq, Apr 2012],



**Western Blot analysis of various cells using Cleaved-Cathepsin L1 HC (T288) Polyclonal Antibody**



Western blot analysis of lysates from HeLa cells, treated with etoposide 25uM 1h, using CATL1 (heavy chain, Cleaved-Thr288) Antibody. The lane on the right is blocked with the synthesized peptide.