

## Cathepsin H rabbit pAb

**Cat#: orb763903 (Manual)**

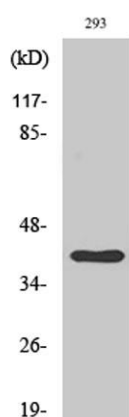
For research use only. Not intended for diagnostic use.

<b>Product Name</b>	Cathepsin H rabbit pAb
<b>Host species</b>	Rabbit
<b>Applications</b>	WB;IHC;IF;ELISA
<b>Species Cross-Reactivity</b>	Human;Rat;Mouse;
<b>Recommended dilutions</b>	Western Blot: 1/500 - 1/2000. ELISA: 1/20000. Not yet tested in other applications.
<b>Immunogen</b>	Synthesized peptide derived from Cathepsin H . at AA range: 70-150
<b>Specificity</b>	Cathepsin H Polyclonal Antibody detects endogenous levels of Cathepsin H protein.
<b>Formulation</b>	Liquid in PBS containing 50% glycerol, 0.5% BSA and 0.02% sodium azide..
<b>Storage</b>	Store at -20°C. Avoid repeated freeze-thaw cycles.
<b>Protein Name</b>	Pro-cathepsin H
<b>Gene Name</b>	CTSH
<b>Cellular localization</b>	Lysosome.
<b>Purification</b>	The antibody was affinity-purified from rabbit antiserum by affinity-chromatography using epitope-specific immunogen.
<b>Clonality</b>	Polyclonal

<b>Concentration</b>	1 mg/ml
<b>Observed band</b>	40kD
<b>Human Gene ID</b>	1512
<b>Human Swiss-Prot Number</b>	P09668
<b>Alternative Names</b>	CTSH; CPSB; Pro-cathepsin H

### Background

The protein encoded by this gene is a lysosomal cysteine proteinase important in the overall degradation of lysosomal proteins. It is composed of a dimer of disulfide-linked heavy and light chains, both produced from a single protein precursor. The encoded protein, which belongs to the peptidase C1 protein family, can act both as an aminopeptidase and as an endopeptidase. Increased expression of this gene has been correlated with malignant progression of prostate tumors. Alternate splicing of this gene results in multiple transcript variants encoding different isoforms. [provided by RefSeq, Jan 2016],



**Western Blot analysis of various cells using Cathepsin H Polyclonal Antibody**