

Cleaved-Cathepsin D HC (L169) rabbit pAb**Cat#: orb763901 (Manual)**

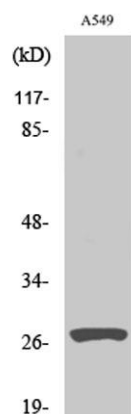
For research use only. Not intended for diagnostic use.

Product Name	Cleaved-Cathepsin D HC (L169) rabbit pAb
Host species	Rabbit
Applications	WB;ELISA
Species Cross-Reactivity	Human;Rat;Mouse;
Recommended dilutions	Western Blot: 1/500 - 1/2000. ELISA: 1/40000. Not yet tested in other applications.
Immunogen	The antiserum was produced against synthesized peptide derived from human CATD. AA range:150-199
Specificity	Cleaved-Cathepsin D HC (L169) Polyclonal Antibody detects endogenous levels of fragment of activated Cathepsin D HC protein resulting from cleavage adjacent to L169.
Formulation	Liquid in PBS containing 50% glycerol, 0.5% BSA and 0.02% sodium azide..
Storage	Store at -20°C. Avoid repeated freeze-thaw cycles.
Protein Name	Cathepsin D
Gene Name	CTSD
Cellular localization	Lysosome. Melanosome. Secreted, extracellular space. Identified by mass spectrometry in melanosome fractions from stage I to stage IV. In aortic samples, detected as an extracellular protein loosely bound to the matrix (PubMed:20551380). .
Purification	The antibody was affinity-purified from rabbit antiserum by affinity-chromatography using epitope-specific immunogen.

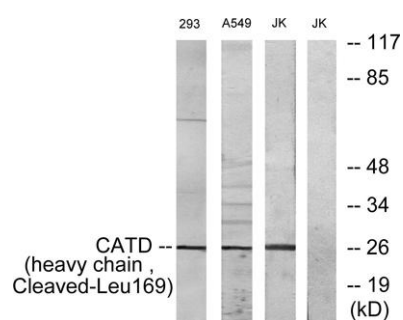
Clonality	Polyclonal
Concentration	1 mg/ml
Observed band	27kD
Human Gene ID	1509
Human Swiss-Prot Number	P07339
Alternative Names	CTSD; CPSD; Cathepsin D

Background

This gene encodes a member of the A1 family of peptidases. The encoded preproprotein is proteolytically processed to generate multiple protein products. These products include the cathepsin D light and heavy chains, which heterodimerize to form the mature enzyme. This enzyme exhibits pepsin-like activity and plays a role in protein turnover and in the proteolytic activation of hormones and growth factors. Mutations in this gene play a causal role in neuronal ceroid lipofuscinosis-10 and may be involved in the pathogenesis of several other diseases, including breast cancer and possibly Alzheimer's disease. [provided by RefSeq, Nov 2015],



Western Blot analysis of various cells using Cleaved-Cathepsin D HC (L169) Polyclonal Antibody



Western blot analysis of lysates from 293, A549, and JurKat cells, treated with etoposide 25uM 1h, using CATD (heavy chain, Cleaved-Leu169) Antibody. The lane on the right is blocked with the synthesized peptide.