

## Cleaved-C1s HC (R437) rabbit pAb

**Cat#: orb763889 (Manual)**

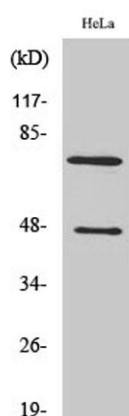
For research use only. Not intended for diagnostic use.

<b>Product Name</b>	Cleaved-C1s HC (R437) rabbit pAb
<b>Host species</b>	Rabbit
<b>Applications</b>	WB;ELISA
<b>Species Cross-Reactivity</b>	Human;Rat;Mouse;
<b>Recommended dilutions</b>	Western Blot: 1/500 - 1/2000. ELISA: 1/20000. Not yet tested in other applications.
<b>Immunogen</b>	The antiserum was produced against synthesized peptide derived from human C1s. AA range:388-437
<b>Specificity</b>	Cleaved-C1s HC (R437) Polyclonal Antibody detects endogenous levels of fragment of activated C1s HC protein resulting from cleavage adjacent to R437.
<b>Formulation</b>	Liquid in PBS containing 50% glycerol, 0.5% BSA and 0.02% sodium azide..
<b>Storage</b>	Store at -20°C. Avoid repeated freeze-thaw cycles.
<b>Protein Name</b>	Complement C1s subcomponent
<b>Gene Name</b>	C1S
<b>Cellular localization</b>	extracellular region,extracellular exosome,blood microparticle,
<b>Purification</b>	The antibody was affinity-purified from rabbit antiserum by affinity-chromatography using epitope-specific immunogen.
<b>Clonality</b>	Polyclonal

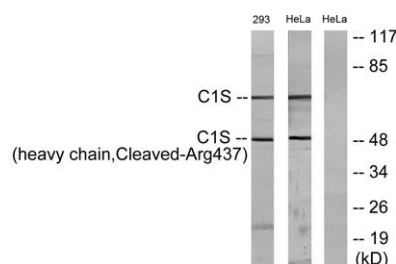
<b>Concentration</b>	1 mg/ml
<b>Observed band</b>	47+76kD
<b>Human Gene ID</b>	716
<b>Human Swiss-Prot Number</b>	P09871
<b>Alternative Names</b>	C1S; Complement C1s subcomponent; C1 esterase; Complement component 1 subcomponent s

### Background

This gene encodes a serine protease, which is a major constituent of the human complement subcomponent C1. C1s associates with two other complement components C1r and C1q in order to yield the first component of the serum complement system. Defects in this gene are the cause of selective C1s deficiency. [provided by RefSeq, Mar 2009],



**Western Blot analysis of various cells using Cleaved-C1s HC (R437) Polyclonal Antibody**



**Western blot analysis of lysates from 293 and HeLa cells, treated with etoposide 25uM 1h, using C1S (heavy chain,Cleaved-Arg437) Antibody. The lane on the right is blocked with the synthesized peptide.**