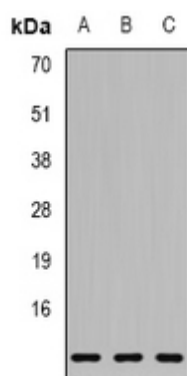


S100A11 antibody

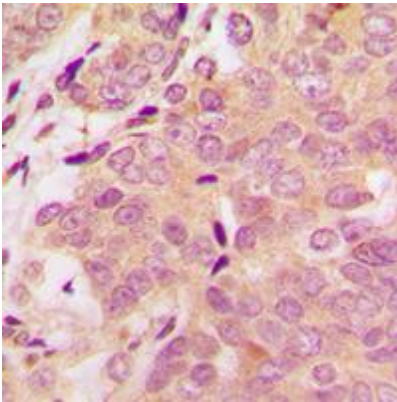
Cat#: orb382021 (CoA)

| | | | | |
|--|--|-------------------|---------------------|--------------|
| Catalog # | Source | Reactivity | Applications | Lot # |
| orb382021 | Rabbit | H, M, R | WB, IH, IF/IC | QA2217 |
| Immunogen | Recombinant full length protein of human S100-A11 | | | |
| Purification | The antibody was purified by immunogen affinity chromatography. | | | |
| Specificity | Recognizes endogenous levels of S100-A11 protein. | | | |
| Clonality | Polyclonal | | | |
| Form | 1 mg/ml, liquid in 0.42% Potassium phosphate, 0.87% Sodium chloride, pH 7.3, 30% glycerol, and 0.01% sodium azide. | | | |
| Dilution | WB (1/500 - 1/2000), IH (1/50 - 1/200), IF/IC (1/50 - 1/200) | | | |
| Gene Symbol | S100A11 | | | |
| Production and Expiration dates | 2022.02-2023.02 | | | |
| Storage/Stability | Shipped at 4°C. Upon delivery aliquot and store at -20°C for one year. Avoid freeze/thaw cycles. | | | |

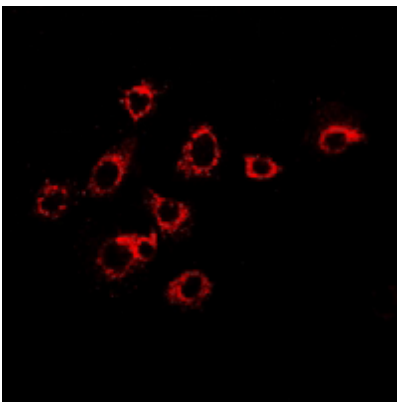


Western blot analysis of S100-A11 expression in LOVO (A), SKOV3 (B), THP1 (C) whole cell lysates.

Explore. Bioreagents.



Immunohistochemical analysis of S100-A11 staining in human breast cancer formalin fixed paraffin embedded tissue section. The section was pre-treated using heat mediated antigen retrieval with sodium citrate buffer (pH 6.0). The section was then incubated with the antibody at room temperature and detected using an HRP conjugated compact polymer system. DAB was used as the chromogen. The section was then counterstained with haematoxylin and mounted with DPX.



Immunofluorescent analysis of S100-A11 staining in SKOV3 cells. Formalin-fixed cells were permeabilized with 0.1% Triton X-100 in TBS for 5-10 minutes and blocked with 3% BSA-PBS for 30 minutes at room temperature. Cells were probed with the primary antibody in 3% BSA-PBS and incubated overnight at 4 °C in a humidified chamber. Cells were washed with PBST and incubated with a DyLight 594-conjugated secondary antibody (red) in PBS at room temperature in the dark.