

E.coli Combined HCP antibody

Cat#: orb344700 (CoA)

Anti-E.Coli Combined Host Cell Protein (HCP) Antibody

Sku: orb344700 **Size:** 100 **Lot:** 8B3613

Product Description: Anti-E.Coli Combined Host Cell Protein (HCP) Antibody

Concentration: 1.02mg/mL

PhysicalState: Liquid (sterile filtered)

Label Unconjugated

Host Rabbit

Species Reactivity E.coli

Buffer 0.02 M Potassium Phosphate, 0.15 M Sodium Chloride, pH 7.2

Stabilizer None

Preservative 0.01% (w/v) Sodium Azide

Storage Condition Store vial at -20° C prior to opening. Aliquot contents and freeze at -20° C or below for extended storage.

Avoid cycles of freezing and thawing. Centrifuge product if not completely clear after standing at room temperature. This product is stable for several weeks at 4° C as an undiluted liquid. Dilute only prior to immediate use.

Synonyms rabbit anti-Host Cell Protein antibody, rabbit anti-HCP antibody, rabbit anti-E.Coli HCP antibody

Application Note Anti-Host Cell Proteins Antibody detects over 300 E.coli proteins and is suitable for western blotting and ELISA.

Background Anti-Host Cell Proteins Antibody recognizes high and low molecular weight protein fractions from E.coli. This

antibody has been validated by 2D electrophoresis western blot to assure highest possible coverage of E.coli HCP. Host Cell Proteins are process-related impurities derived from a host cell expression system that may be present in trace amounts in a final drug substance. HCP Antibodies are used to detect impurities in biologically based therapeutics. Detecting impurities often unseen by 1-D electrophoresis, a 2D electrophoresis western blot analysis delivers more complete insight into the immunocoverage of protein components of the host cell lysate.

Purity And Specificity Host Cell Protein A purified antibody is directed against high molecular weight and low molecular weight E.coli Host Cell Proteins. The product was purified from monospecific antiserum by Protein A affinity chromatography.

Reactivity is directed against E.coli Host Cell Proteins. Cross-reactivity with other species is likely but has not been determined. Reactivity against homologues from other sources is not known.

Assay Dilutions 2D: 1:500-1:1000

ELISA 1:1000-1:2000

Western Blot 1:500-1:1000

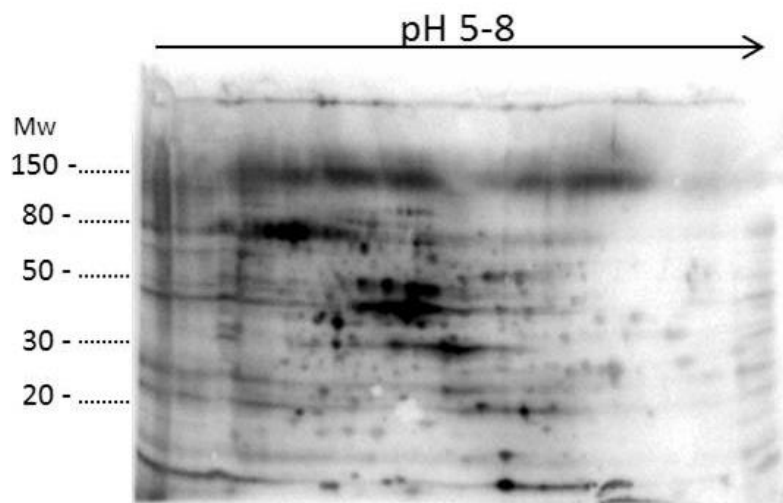
Other Assays 2D: 1:500-1:1000

Expiration Expiration date is one (1) year from date of opening.

Immunogen Anti-Host Cell Proteins Antibody was prepared by repeated immunizations with a full range of high molecular weight (HMW) and low molecular weight (LMW) proteins from E.Coli (BL21).

Images

1. 2D Western Blot of anti-E.coli Host Cell Protein antibody. Load: 35 µg Total HCP. Primary antibody: Rabbit anti-HCP antibody at 1:200 for overnight at 4°C. Secondary antibody: Goat anti-rabbit secondary antibody at 1:10,000 for 30 min at RT. Block: MB-070 for 1 hour at RT.



2. ELISA of Rabbit Anti-E.coli Host Cell Protein Antibody. Antigen: Total HCP protein. Coating amount: 0.1 µg per well. Primary antibody: E.coli HCP antibody at 10 µg/mL. Dilution series: 2-fold. Mid-point concentration: 5 ng/mL HCP antibody. Secondary antibody: Peroxidase rabbit secondary antibody at 1:20,000. Substrate: TMB (p/n TMBE-0100).

