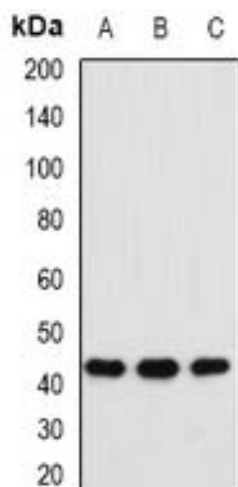


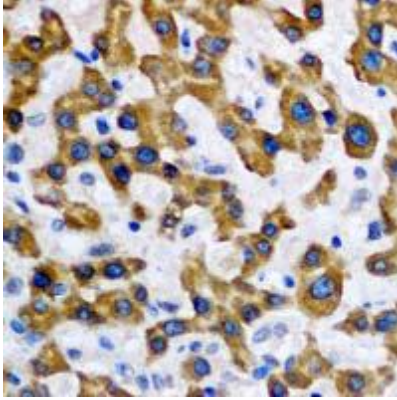
MAT1A antibody

Cat#: orb341137 (User Manual)

Description	Rabbit polyclonal antibody to MAT1A
Immunogen	Recombinant full length protein of human MAT1A
Purification	The antibody was purified by immunogen affinity chromatography.
Specificity	Recognizes endogenous levels of MAT1A protein.
Clonality	Polyclonal
Conjugation	
Form	Liquid in 0.42% Potassium phosphate, 0.87% Sodium chloride, pH 7.3, 30% glycerol, and 0.01% sodium azide.
Dilution	WB (1/500 - 1/2000), IH (1/50 - 1/200)
Gene Symbol	MAT1A
Alternative Names	AMS1; MATA1; S-adenosylmethionine synthase isoform type-1; AdoMet synthase 1; Methionine adenosyltransferase 1; MAT 1; Methionine adenosyltransferase I/III; MAT-I/III
Entrez Gene	4143 (Human); 11720 (Mouse); 25331 (Rat)
SwissProt	Q00266 (Human); Q91X83 (Mouse); P13444 (Rat)
Storage/Stability	Shipped at 4°C. Upon delivery aliquot and store at -20°C for one year. Avoid freeze/thaw cycles.



Western blot analysis of MAT1A expression in HepG2 (A), mouse liver (B), rat liver (C) whole cell lysates.



Immunohistochemical analysis of MAT1A staining in human liver cancer formalin fixed paraffin embedded tissue section. The section was pre-treated using heat mediated antigen retrieval with sodium citrate buffer (pH 6.0). The section was then incubated with the antibody at room temperature and detected using an HRP conjugated compact polymer system. DAB was used as the chromogen. The section was then counterstained with haematoxylin and mounted with DPX.