

Rat CRP ELISA Kit

Cat#: orb146704 (Product Manual)

Assay Principle

The Biorbyt Picokine™ Rat Crp Pre-Coated ELISA (Enzyme-Linked Immunosorbent Assay) kit is a solid phase immunoassay specially designed to measure Rat Crp with a 96-well strip plate that is pre-coated with antibody specific for Crp. The detection antibody is a biotinylated antibody specific for Crp. The capture antibody is polyclonal antibody from goat, the detection antibody is polyclonal antibody from goat. The kit contains recombinant Rat Crp with immunogen: Expression system for standard: NSO; Immunogen sequence: H20-S230. The kit is analytically validated with ready to use reagents.

To measure Rat Crp, add standards and samples to the wells, then add the biotinylated detection antibody. Wash the wells with PBS or TBS buffer, and add Avidin-Biotin-Peroxidase Complex (ABC-HRP). Wash away the unbounded ABC-HRP with PBS or TBS buffer and add TMB. TMB is substrate to HRP and will be catalyzed to produce a blue color product, which changes into yellow after adding acidic stop solution. The density of the yellow product is linearly proportional to Rat Crp in the sample. Read the density of the yellow product in each well using a plate reader, and benchmark the sample wells' readings against the standard curve to determine the concentration of Rat Crp in the sample.

Overview

Product Name	Rat CRP/C Reactive Protein ELISA Kit PicoKine™
Reactive Species	Rat
Size	96wells/kit, with removable strips.
Description	Sandwich High Sensitivity ELISA kit for Quantitative Detection of Rat CRP. 96wells/kit, with removable strips.
Sensitivity	<10pg/ml *The sensitivity or the minimum detectable dose (MDD) is the lower limit of target protein that can be detected by the kit. It is determined by adding two standard deviations to the mean O.D. value of twenty (20) blank wells and calculating the corresponding concentration.
Detection Range	156pg/ml-10000pg/ml
Storage Instructions	Store at 4°C for 6 months, at -20°C for 12 months. Avoid multiple freeze-thaw cycles(Shipped with wet ice.)
Uniprot ID	P48199

Technical Details

Capture/Detection Antibodies	The capture antibody is polyclonal antibody from goat, the detection antibody is polyclonal antibody from goat.
Specificity	Natural and recombinant Rat Crp
Immunogen	Expression system for standard: NSO; Immunogen sequence: H20-S230
Cross Reactivity	There is no detectable cross-reactivity with other relevant proteins.

Notice Before Application

Please read the following instructions before starting the experiment.

1. To inspect the validity of experiment operation and the appropriateness of sample dilution proportion, pilot experiment using standards and a small number of samples is recommended.
2. Before using the Kit, spin tubes and bring down all components to the bottom of tubes.
3. Don't let 96-well plate dry, for dry plate will inactivate active components on plate.
4. Don't reuse tips and tubes to avoid cross contamination.
5. Avoid using the reagents from different batches together.

Kit Components/Materials Provided

Description	Quantity	Volume
Anti-Rat Crp Pre-coated 96-well strip microplate	1	12 strips of 8 wells
Rat Crp Standard	2	10ng/tube
Rat Crp Biotinylated antibody (100x)	1	130 µl
Avidin-Biotin-Peroxidase Complex (100x)	1	130 µl
Sample Diluent	1	30ml
Antibody Diluent	1	12ml
Avidin-Biotin-Peroxidase Diluent	1	12ml
Color Developing Reagent (TMB)	1	10ml
Stop Solution	1	10ml
Plate Sealers	4	Piece

Required Materials That Are Not Supplied

Microplate Reader capable of reading absorbance at 450nm.

Automated plate washer (optional)

Pipettes and pipette tips capable of precisely dispensing 0.5 µl through 1 ml volumes of aqueous solutions.

Multichannel pipettes are recommended for large amount of samples.

Deionized or distilled water.

500ml graduated cylinders.

Test tubes for dilution.

Washing buffer (neutral PBS or TBS).

Preparation of 0.01M TBS: Add 1.2g Tris, 8.5g NaCl; 450µl of purified acetic acid or 700µl of concentrated hydrochloric acid to 1000ml H₂O

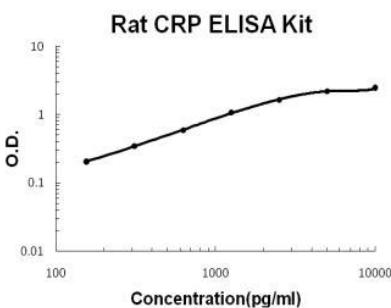
Preparation of 0.01 M PBS: Add 8.5g sodium chloride, 1.4g Na O and adjust pH to 7.2-7.4

Rat CRP/C Reactive Protein ELISA Kit Standard Curve Example

Highest O.D. value might be higher or lower than in the example. The experiment result is statistically significant if the highest O.D. value is no less than 1.0.

Concentration (pg/ml)	0	156	312	625	1250	2500	5000	10000
O.D.	0.032	0.202	0.350	0.596	1.092	1.653	2.213	2.437

Rat CRP PicoKine ELISA Kit standard curve



A standard curve is provided for demonstration only. A standard curve should be generated for each set of samples assayed.

Intra/Inter Assay Variability

Biorbyt spend great efforts in documenting lot to lot variability and make sure our assay kits produce robust data that are reproducible.

Intra-Assay Precision (Precision within an assay): Three samples of known concentration were tested on one plate to assess intra-assay precision.

Inter-Assay Precision (Precision across assays): Three samples of known concentration were tested in separate assays to assess inter-assay precision.

Sample	Intra-Assay Precision			Inter-Assay Precision		
	1	2	3	1	2	3
n	16	16	16	24	24	24
Mean(pg/ml)	225	1505	4812	235	1505	4457
Standard deviation	11.02	81.27	307.96	11.75	108.36	329.81
CV(%)	4.9%	5.4%	6.4%	5%	7.2%	7.4%

Reproducibility

To assay reproducibility, three samples with differing target protein concentrations were assayed using four different lots.

Lots	Lot1 (pg/ml)	Lot2 (pg/ml)	Lot3 (pg/ml)	Lot4 (pg/ml)	Mean (pg/ml)	Standard Deviation	CV (%)
Sample 1	225	211	199	209	211	9.27	4.3%
Sample 2	1505	1663	1572	1511	1562	63.53	4%
Sample 3	4812	4672	4766	4677	4731	59.54	1.2%

*number of samples for each test n=16.

Preparation Before The Experiment

Item	Preparation
All reagents	Bring all reagents to 37°C prior to use. The assay can also be done at room temperature however we recommend doing it at 37°C for best consistency with our QC results. Also the TMB incubation time estimate (15-25min) is based on 37°C.
Wash buffer	Prepare standard 1X PBS as wash buffer. Wash buffer can be prepared in-house or purchased from Bosterbio.com

	Preparation of wash buffer: Add 8.5g NaCl, 1.4g Na ₂ HPO ₄ and 0.2g NaH ₂ PO ₄ to 1000ml distilled water and adjust pH to 7.2-7.6.
Biotinylated Anti-Rat Crp antibody	It is recommended to prepare this reagent immediately prior to use by diluting the Rat Crp Biotinylated antibody (100x) 1:100 with Antibody Diluent. Prepare 100 µl by adding 1 µl of Biotinylated antibody (100x) to 99 µl of Antibody Diluent for each well. Mix gently and thoroughly and use within 2 hours of generation.
Avidin-Biotin-Peroxidase Complex	It is recommended to prepare this reagent immediately prior to use by diluting the Avidin-Biotin-Peroxidase Complex (100x) 1:100 with Avidin-Biotin-Peroxidase Diluent. Prepare 100 µl by adding 1 µl of Avidin-Biotin-Peroxidase Complex (100x) to 99 µl of Avidin-Biotin-Peroxidase Diluent for each well. Mix gently and thoroughly and use within 2 hours of generation.
Rat Crp Standard	It is recommended that the standards be prepared no more than 2 hours prior to performing the experiment. Use one 10ng of lyophilized Rat Crp standard for each experiment. Gently spin the vial prior to use. Reconstitute the standard to a stock concentration of 10ng/ml using 1ml of sample diluent. Allow the standard to sit for a minimum of 10 minutes with gentle agitation prior to making dilutions.
Microplate	The included microplate is coated with capture antibodies and ready-to-use. It does not require additional washing or blocking. The unused well strips should be sealed and stored in the original packaging.

Dilution of Rat Crp Standard

1. Number tubes 1-8. Final Concentrations to be Tube # 1 –10000pg/ml, #2 –5000pg/ml, #3 – 2500pg/ml, #4 – 1250pg/ml, #5 – 625pg/ml, #6 – 312.5pg/ml, #7 – 156.25pg/ml, #8 – Sample Diluent serves as the zero standard (0pg/ml).
2. For standard #1, add 1000µl of undiluted standard stock solution to tube #1.
3. Add 300 µl of sample diluent to tubes # 2-7.
4. To generate standard #2, add 300 µl of standard #1 from tube #1 to tube #2 for a final volume of 600 µl. Mix thoroughly.
5. To generate standard #3, add 300 µl of standard #2 from tube #2 to tube #3 for a final volume of 600 µl. Mix thoroughly.

Sample Preparation and Storage

These sample collection instructions and storage conditions are intended as a general guideline and the sample stability has not been evaluated.

Sample Type	Procedure
Cell culture supernatants	Clear sample of particulates by centrifugation, assay immediately or store samples at -20°C.
Serum	Use a serum separator tube (SST) and allow serum to clot at room temperature for about four hours. Then, centrifuge for 15 min at approximately 1,000 x g. assay immediately or store samples at -20°C.
Plasma	Collect plasma using heparin or EDTA as an anticoagulant. Centrifuge for 15 min at approximately 1,000 x g. Assay immediately or store samples at -20°C. *Note: it is important to not use anticoagulants other than the ones described above to treat plasma for other anticoagulants could block the antibody binding site.
Cell lysates	Lyse the cells, make sure there are no visible cell sediments. Centrifuge cell lysates at approximately 10000 X g for 5 min. Collect the supernatant.

Sample Dilution

The target protein concentration should be estimated and appropriate sample dilutions should be selected such that the final protein concentration lies near the middle of the linear dynamic range of the assay.

It is recommended to prepare 150 µl of sample for each replicate to be assayed. The samples should be diluted with sample diluent and mixed gently.

Assay protocol

It is recommended that all reagents and materials be equilibrated to 37°C/room temperature prior to the experiment (see Preparation Before The Experiment if you have missed this information).

1. Prepare all reagents and working standards as directed previously.
2. Remove excess microplate strips from the plate frame and seal and store them in the original packaging.
3. Add 100 µl of the standard, samples, or control per well. Add 100 µl of the sample diluent buffer into the zero well. At least two replicates of each standard, sample, or control is recommended.
4. Cover with the plate sealer provided and incubate for 120 minutes at RT (or 90 min. at 37 °C).
5. Remove the cover and discard the liquid in the wells into an appropriate waste receptacle. Invert the plate on the benchtop onto a paper towel and tap the plate to gently blot any remaining liquid. It is recommended that the wells are not allowed to completely dry at any time.
6. Add 100 µl of the prepared 1x Biotinylated Anti-Rat Crp antibody to each well.

7. Cover with plate sealer and incubate for 90 minutes at RT (or 60 minutes at 37°C).
8. Wash the plate 3 times with the 1x wash buffer.
 - a. Discard the liquid in the wells into an appropriate waste receptacle. Then, invert the plate on the benchtop onto a paper towel and tap the plate to gently blot any remaining liquid. It is recommended that the wells are not allowed to completely dry at any time.
 - b. Add 300 µl of the 1x wash buffer to each assay well. (For cleaner background incubate for 60 seconds between each wash).
 - c. Repeat steps a-b 2 additional times.
9. Add 100 µl of the prepared 1x Avidin-Biotin-Peroxidase Complex into each well. Cover with the plate sealer provided and incubate for 40 minutes at RT (or 30 minutes at 37°C).
10. Wash the plate 5 times with the 1x wash buffer.
 - a. Discard the liquid in the wells into an appropriate waste receptacle. Then, invert the plate on the benchtop onto a paper towel and tap the plate to gently blot any remaining liquid. It is recommended that the wells are not allowed to completely dry at any time.
 - b. Add 300 µl of the 1x wash buffer to each assay well. (For cleaner background incubate for 60 seconds between each wash).
 - c. Repeat steps a-b 4 additional times.
11. Add 90 µl of Color Developing Reagent to each well. Cover with the plate sealer provided and incubate in the dark for 30 minutes at RT (or 15-25 minutes at 37°C). (The optimal incubation time must be empirically determined. A guideline to look for is blue shading the top four standard wells, while the remaining standards remain clear.)
12. Add 100 µl of Stop Solution to each well. The color should immediately change to yellow.
13. Within 30 minutes of stopping the reaction, the O.D. absorbance should be read with a microplate reader at 450nm.