

## Fumonisin B1 (FB1) ELISA Kit

Catalog No: orb1184855 (User Manual)

96 Tests

**FOR RESEARCH USE ONLY; NOT FOR THERAPEUTIC OR DIAGNOSTIC APPLICATIONS!**

**PLEASE READ THROUGH ENTIRE procedure BEFORE BEGINNING!**

### INTENDED USE

For the quantitative detection of **Fumonisin B1 (FB1)** concentration in **corn, feed and cooking oil**.

This package insert must be read in its entirety before using this product.

### REAGENTS AND MATERIALS PROVIDED

Reagents	Quantity	Reagents	Quantity
Assay plate (96 Wells)	1	Instruction manual	1
Standard	6 x 1 mL	Redissolving Solution (concentrate 10 x)	2 x 20 mL
Antibody	1 x 6 mL	HRP-Conjugate	1 x 6 mL
Wash Buffer (concentrate 20 x)	1 x 20 mL	Stop Solution	1 x 6 mL
Substrate A	1 x 6 mL	Substrate B	1 x 6 mL
Adhesive Films	4		

### MATERIALS REQUIRED BUT NOT SUPPLIED

1. Microplate reader capable of measuring absorbance at 450 nm, with the correction wavelength set at the dual-wavelength 450/630 nm.
2. Equipments: microplate reader, printer, homogenizer, nitrogen-drying device, vortex, centrifuge, measuring pipets, balance (a reciprocal sensibility of 0.01 g).
3. Micropipettors: single-channel 20-200  $\mu$ L, 100-1000  $\mu$ L, and multi-channel 250  $\mu$ L.
4. Reagents: Methanol, n-Hexane.

**STORAGE**

<b>Unopened kit</b>	Store at 2 - 8°C. Do not use past kit expiration date.	
<b>Opened/ Reconstituted Reagents</b>	Coated assay plate	May be stored for up to 1 month at 2 - 8°C. Return unused wells to the foil pouch containing the desiccant pack, reseal along entire edge of zip-seal, and avoid the damp.
	Standard	May be stored for up to 1 month at 2 - 8°C.
	Redissolving Solution	
	Antibody	
	HRP-Conjugate	
	Wash Buffer	
	Derivatization reagent	
	Substrate A	
	Substrate B	
	Stop Solution	

**INTRODUCTION**

Fumonisin B1 is the most prevalent member of a family of toxins, known as fumonisins, produced by several species of *Fusarium* molds, such as *Fusarium verticillioides*, which occur mainly in maize (corn), wheat and other cereals. Fumonisin B1 contamination of maize has been reported worldwide at mg/kg levels. Human exposure occurs at levels of micrograms to milligrams per day and is greatest in regions where maize products are the dietary staple.

Fumonisin B1 is hepatotoxic and nephrotoxic in all animal species tested. The earliest histological change to appear in either the liver or kidney of fumonisin-treated animals is increased apoptosis followed by regenerative cell proliferation. While the acute toxicity of fumonisin is low, it is the known cause of two diseases which occur in domestic animals with rapid onset: equine leukoencephalomalacia and porcine pulmonary oedema syndrome. Both of these diseases involve disturbed sphingolipid metabolism and cardiovascular dysfunction.

**PRINCIPLE OF ASSAY**

This assay is based on the competitive enzyme immunoassay for the detection of FB1 in the sample. The coupling antigens are pre-coated on the micro-well stripes. The FB1 in the sample and the coupling antigens pre-coated on the micro-well stripes compete for the anti-FB1 antibodies. After the addition of the enzyme conjugate, the TMB substrate is added for coloration. The optical density (OD) value of the sample has a negative correlation with the FB1 in it. This value is compared to the standard curve and the FB1 concentration is subsequently obtained.

### LIMITATIONS OF THE PROCEDURE

1. FOR RESEARCH USE ONLY. NOT FOR USE IN DIAGNOSTIC PROCEDURES.
2. The kit should not be used beyond the expiration date on the kit label.
3. Do not mix or substitute reagents with those from other lots or sources.
4. It is important that the Calibrator Diluent selected for the standard curve be consistent with the samples being assayed.
5. If samples generate values higher than the highest standard, dilute the samples with the appropriate Calibrator Diluent and repeat the assay.
6. Any variation in standard diluent, operator, pipetting technique, washing technique, incubation time or temperature, and kit age can cause variation in binding.
7. This assay is designed to eliminate interference by soluble receptors, binding proteins, and other factors present in biological samples. Until all factors have been tested in the ELISA Kit, the possibility of interference cannot be excluded.

### DETECTION RANGE

0.5 ppb - 40.5 ppb. The standard curve concentrations used for the ELISA's were 40.5 ppb, 13.5 ppb, 4.5 ppb, 1.5 ppb, 0.5 ppb, 0 ppb.

Tube	S5	S4	S3	S2	S1	S0
ppb	40.5	13.5	4.5	1.5	0.5	0

### TECHNICAL SPECIFICATIONS

**Sensitivity:** 0.5 ppb

**Detection limit:**

Corn, Feed	50 ppb
Cooking oil	10 ppb

**Cross-reaction rate:**

Fumonisin B1	100%
--------------	------

**Recovery rate:**

Corn	100±15%
Feed	95±15%
Cooking oil	85±15%

## PRECISION

### **Intra-assay Precision** (Precision within an assay)

Three samples of known concentration were tested twenty times on one plate to assess intra-assay precision.

### **Inter-assay Precision** (Precision between assays)

Three samples of known concentration were tested in forty separate assays to assess inter-assay precision.

$$CV(\%) = SD/mean \times 100$$

**Intra-Assay: CV < 8%**

**Inter-Assay: CV < 12%**

## STABILITY

The stability of ELISA kit is determined by the loss rate of activity. The loss rate of this kit is less than 5% within the expiration date under appropriate storage condition.

The loss rate was determined by accelerated thermal degradation test. Keep the kit at 37°C for 4 and 7 days, and compare O.D. values of the kit kept at 37°C with that of at recommended temperature. (referring from China Biological Products Standard, which was calculated by the Arrhenius equation. For ELISA kit, 4 days storage at 37°C can be considered as 6 months at 2-8°C, which means 7 days at

37°C equaling 12 months at 2-8°C).

### **Note:**

To minimize extra influence on the performance, operation procedures and lab conditions, especially room temperature, air humidity, incubator temperature should be strictly controlled. It is also strongly suggested that the whole assay is performed by the same operator from the beginning to the end.

## SAMPLE PRE-TREATMENT

**Instructions** (The following points must be dealt with before the pre-treatment of any kind of sample):

1. Only the disposable tips can be used for the experiments and the tips must be changed when used for absorbing different reagents;
2. Before the experiment, each experimental utensil must be clean and should be re-cleaned if necessary, in order to avoid the contamination that interferes with the experimental results.

### **Solution preparation before sample pre-treatment:**

1. Only the disposable tips can be used for the experiments and the tips must be changed when used for absorbing different reagents;

- Before the experiment, each experimental utensil must be clean and should be re-cleaned if necessary, in order to avoid the contamination that interferes with the experimental results.

**Samples preparation:**

**Corn and Feed;**

- Take 1 g crushed samples and pipette 5 mL sample extract.
- Mix for 5 minutes and Centrifugal at above 4000 r/min at room temperature (20-25 °C) 10 minutes.
- Transfer 0.1 mL supernatant (must be clear) into a new centrifuge tube, add 1.9 mL redissolving solution (1 x), mix properly for 2 minutes.
- Take 50 µL for further analysis.

**Fold of dilution of sample: 100**

**Cooking oil;**

- Take 5 mL samples and pipette 5 mL sample extract and 8 mL n-hexane.
- Mix for 5 minutes and Centrifugal at above 4000 r/min at room temperature (20-25 °C) 10 minutes.
- Remove supernatant, take 0.1 mL in the lower liquid, add 1.9 mL redissolving solution (1 x), mix properly for 2 minutes.
- Take 50 µL for further analysis.

**Fold of dilution of sample: 20**

**SAMPLE STORAGE**

- Untreated samples are stored at frozen environment.
- Prepared sample can be stable at 2-8°C for 1 week.

**TABLE**

**Table depicting an example of the arrangement of blanks, standards and samples in the microwell strips:**

	1	2	3	4
A	Standard 5 (40.5 ppb)	Standard 5 (40.5 ppb)	Sample 3	Sample 3
B	Standard 4 (13.5 ppb)	Standard 4 (13.5 ppb)	Sample 4	Sample 4
C	Standard 3 (4.5 ppb)	Standard 3 (4.5 ppb)	Sample 5	Sample 5
D	Standard 2 (1.5 ppb)	Standard 2 (1.5 ppb)	Sample 6	Sample 6
E	Standard 1 (0.5 ppb)	Standard 1 (0.5 ppb)	Sample 7	Sample 7
F	Standard 0 (0 ppb)	Standard 0 (0 ppb)	Sample 8	Sample 8
G	Sample 1	Sample 1	Sample 9	Sample 9
H	Sample 2	Sample 2	Sample 10	Sample 10

### ASSAY PROCEDURE

**Bring all reagents and samples to room temperature before use. It is recommended that all samples, controls, and standards be assayed in duplicate.**

1. Take out all the necessary reagents from the kit and place at the room temperature (20-25°C) for at least 30 min. Note that each reagent must be shaken to mix evenly before use.
2. Take the required micro-well strips and plate frames. Re-sealed the unused microplate, store at 2-8°C, not frozen.
3. Numbering: number the micro-wells according to samples and standard solution; each sample and standard solution should be performed in duplicate, record their positions.
4. Add 50 µL of the sample or standard solution into separate wells; add 50 µL of HRP-Conjugate, then add 50 µL of the antibody working solution into each well, mix gently by shaking the plate manually. Seal the microplate with the cover membrane, and incubate at 25°C for 30 minutes.
5. Pour the liquid, wash the microplate with the washing buffer at 250 µL/well for 5 times. Each time soak the well with the washing buffer for 15-30s, flap to dry with absorbent paper (if there are the bubbles after flapping, cut them with the clean tips).
6. Add 50 µL of Substrate A and 50 µL of Substrate B to each well, mix well. Incubate for 15 minutes at 25°C. Keeping the plate away from drafts and other temperature fluctuations in the dark. Avoid placing the plate in direct light.
7. Add 50 µL of Stop Solution to each well. when the first four wells containing the highest concentration of standards develop obvious blue color. If color change does not appear uniform, gently tap the plate to ensure thorough mixing.
8. Determine the optical density of each well within 5 minutes, using a microplate reader set to 450 nm. If wavelength correction is available, set to 630 nm. Subtract readings at 630 nm from the readings at 450 nm. This subtraction will correct for optical imperfections in the plate. Readings made directly at 450 nm without correction may be higher and less accurate.

### CALCULATION OF RESULTS

**There are two methods to judge the results; the first one is the rough judgment, while the second is the quantitative determination. Note that the OD value of the sample has a negative correlation with the FB1 concentration in the sample**

#### 1) Qualitative determination

The concentration range (ppb) of FB1 can be obtained from comparing the average OD value of the sample with that of the standard solution.

#### 2) Quantitative determination

The mean values of the absorbance values obtained for the average OD value (B) of the sample and the standard solution divided by the OD value (B0) of the first standard solution (0 standard) and subsequently multiplied by 100%, that is

Percentage of absorbance value =	B	×100%
	B0	

B—the average (double wells) OD value of the sample or the standard solution

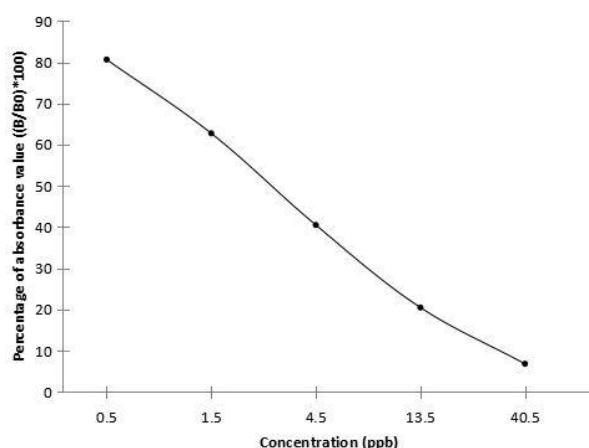
B0—the average OD value of the 0 ppb standard solution

Draw the standard curve with the absorption percentages of standard solutions and the semilogarithm values of FB1 standard solutions (ppb) as Y- and X-axis, respectively. Read the corresponding concentration of the sample from the standard curve by incorporating its absorption percentage into the standard curve. The resulting value is subsequently multiplied by the dilution fold, finally obtaining FB1 concentration in the sample.

Using the professional software of this kit will be more convenient for accurate and rapid analysis of a large amount of samples.

## TYPICAL DATA

For convenience in result calculation, absorbance as abscissa and standard concentrations can be used as ordinate. The standard curve provided in the manual is only for reference, experimenters should draw the standard curve based on data of themselves.



**Precautions:** This kit contains trace amount of proclin® 300 which is toxic and direct touch of reagents by mouth, eyes, and skin should be avoided. If get touched or get into the mouth, please rinse with plenty of water. The Stop Buffer is a corrosive sulfuric acid solution, please take care for safety.

## IMPORTANT NOTES

1. The instruction manual also suits for the kit of 48T, but all reagents of 48T kit are reduced by half.
2. There may be some foggy substance in the wells when the plate is opened at the first time. It will not effect on the final assay results. Do not remove microtiter plate from the storage bag unless needed.
3. Do not mix or substitute reagents from one kit lot to another. Use only the reagents supplied by manufacturer.
4. Samples or reagents addition: Please use the freshly prepared Standard. Please carefully add samples to wells and mix gently to avoid foaming. Do not touch the well wall as far as possible. For each step in the procedure, total dispensing time for addition of reagents or samples to the assay plate should not exceed 10 minutes. This will ensure equal elapsed time for each pipetting step, without interruption. Duplication of all standards and specimens, although not required, is recommended. To avoid cross-contamination, change pipette tips between additions of each standard level, between sample additions, and between reagent additions. Also, use separate reservoirs for each reagent.

5. Incubation: To ensure accurate results, proper adhesion of plate sealers during incubation steps is necessary. Do not allow wells to sit uncovered for extended periods between incubation steps. Once reagents have been added to the well strips, DO NOT let the strips DRY at any time during the assay. Incubation time and temperature must be observed.
6. Washing: The wash procedure is critical. Complete removal of liquid at each step is essential to good performance. After the last wash, remove any remaining Wash Solution by aspirating or decanting and remove any drop of water and fingerprint on the bottom of the plate. Insufficient washing will result in poor precision and falsely elevated absorbance reading. When using an automated plate washer, adding a 30 second soak period following the addition of wash buffer, and/or rotating the plate 180 degrees between wash steps may improve assay precision.
7. Controlling of reaction time: Observe the change of color after adding Substrate Solution (e.g. observation once every 10 minutes), Substrate Solution should change from colorless or light blue to gradations of blue. If the color is too deep, add Stop Solution in advance to avoid excessively strong reaction which will result in inaccurate absorbance reading.
8. Substrate Solution is easily contaminated. Substrate Solution should remain colorless or light blue until added to the plate. Please protect it from light.
9. Stop Solution should be added to the plate in the same order as the Substrate Solution. The color developed in the wells will turn from blue to yellow upon addition of the Stop Solution. Wells that are green in color indicate that the Stop Solution has not mixed thoroughly with the Substrate Solution.
10. Protect all reagents from strong light during storage and incubation. All the bottle caps of reagents should be covered tightly to prevent the evaporation and contamination of microorganism.
11. Wrong operations during the reagents preparation and loading, as well as incorrect parameter setting for the plate reader may lead to incorrect results. A microplate plate reader with a bandwidth of 10nm or less and an optical density range of 0-3 O.D. or greater at  $450 \pm 10\text{nm}$  wavelength is acceptable for use in absorbance measurement.
12. Even the same operator might get different results in two separate experiments. In order to get better reproducible results, the operation of every step in the assay should be controlled. Furthermore, a preliminary experiment before assay for each batch is recommended.
13. Limited by the current condition and scientific technology, we can't completely conduct the comprehensive identification and analysis on the raw material provided by suppliers. So there might be some qualitative and technical risks to use the kit.
14. The final experimental results will be closely related to validity of the products, operation skills of the end users and the experimental environments. Please make sure that sufficient samples are available.
15. Kits from different batches may be a little different in detection range, sensitivity and color developing time.
16. Each kit has been strictly passed Q.C test. However, results from end users might be inconsistent with our in-house data due to some unexpected transportation conditions or different lab equipments. Intra-assay variance among kits from different batches might arise from above factors, too.
17. Kits from different manufacturers with the same item might produce different results, since we haven't compared our products with other manufacturers.
18. The Stop Solution provided with this kit is an acid solution. Wear eye, hand, face, and clothing protection when using this material.
19. Valid period: six months.